



MOBILITY **SOLUTIONS**

Market-ready innovations for
more liveable cities

Edition 2024



WE GIVE YOU THE VISIBILITY YOU NEED!

The Mobility Innovation
Marketplace is your go-to place:

- ✓ Showcase your product
- ✓ Feature your best practice
- ✓ Browse plenty of market opportunities
- ✓ Keep yourself up-to-date with the latest mobility trends and news

Get in touch!



CONTENTS

01.	Our CEO's letter	04
02.	Inside this catalogue	05
03.	Your Mobility Innovation Marketplace	06
04.	Health & mobility solutions	08
05.	Electrification of transport & alternative fuel solutions	28
06.	Mobility data management solutions	42
07.	Urban logistics solutions	78
08.	Public transport solutions	90
09.	New mobility services solutions	100
10.	Parking and curb side management solutions	116
11.	More mobility solutions to explore	136
12.	CIVITAS mobility solutions	162

OUR CEO'S LETTER



MARIA TSAVACHIDIS
CEO EIT Urban Mobility

I am delighted to present the 7th edition of our Solutions Catalogue, which highlights the most innovative and impactful solutions supported by EIT Urban Mobility.

This edition features over 140 innovative solutions that respond to the major challenges to achieving sustainable urban mobility. The transport sector is responsible for approximately one quarter of planet-warming emissions and is the main cause of air pollution in cities. Continuing with business-as-usual approaches in transport will result in rising emissions, more congestion in urban centres, worsening air quality, and continued road safety hazards. There is an urgent need for transformative action to change the trajectory of mobility and make cities more liveable.

EIT Urban Mobility, Europe's leading innovation community for urban mobility, co-funded by the European Union, facilitates the testing and scaling of solutions that demonstrate high potential in driving systemic change in the way we move around cities. The solutions in this catalogue not only contribute to reducing emissions, but also aim to improve other key areas of urban mobility, such as safety, use of public space, and access for vulnerable users.

We hope the solutions offered by our community inspire cities and corporations to set ambitious targets towards sustainable urban mobility – for the health of our planet and the wellbeing of its citizens.

WHAT'S INSIDE THIS CATALOGUE

This Mobility Solutions Catalogue contains 140+ market-ready innovations that address different areas such as:



Other mobility and CIVITAS solutions:



Don't forget to scan the QR code you'll find on each page to explore them online and get in touch with them!

YOUR **MOBILITY** INNOVATION MARKETPLACE



Check all of them!

440+

Mobility
Solutions

**KAROS
MOBILITY'S
CARPOOLING
APP**

**RASTEL.IO'S
MODULAR
BIKE
PARKING**

**INSTANT
SYSTEMS'
ALL-IN-ONE
MAAS**

**LIBELIUM'S
SMART
PARKING
SENSOR**

**PARKUNLOAD'S
SMART LOADING
ZONES**



60

Best
practices

**VITORIA-GASTEIZ
IMPLEMENTED
A CARPOOLING
NETWORK**

**HELSINGBORG
NUDGED A
CYCLING CULTURE**

Check all of them!

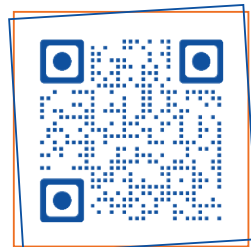
**TORRELAVEGA
OPTIMISED
LOADING ZONES**

**ISTANBUL
ADDRESSED
MICROMOBILITY
SAFETY**

**MUNICH WANTS
TO UNDERSTAND
INDIVIDUAL
MOBILITY BETTER**

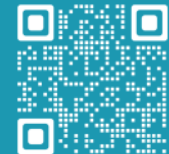


65+ insights to
keep you updated
on the latest
mobility trends



Market opportunities to elevate your
business with new ones added each month!

**Funded calls | City challenges
Mobility prizes | Tenders**

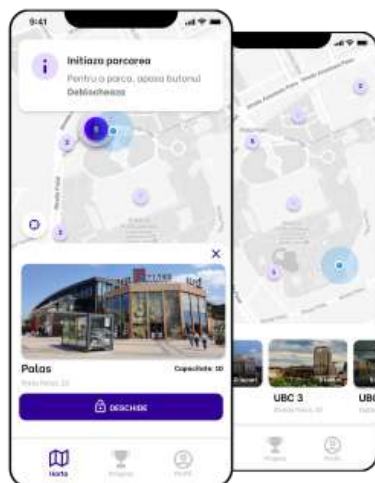


HEALTH AND MOBILITY

Health and mobility relate to the impact of transportation choices on public health, including promoting active modes of transportation (walking and cycling), improving air quality, and reducing noise pollution.

EXPLORE ALL THE SOLUTIONS!





Rastel.io: Bike parking platform

Value proposition



An access control system that can transform any enclosed space into a smart bike parking room, enabling parking managers to seamlessly manage user access, track usage and incentivise cycling.

Product details



Customers step into the future of bike parking with a cutting-edge app-based access control and management system. Traditional RFID cards or keys are eliminated, making way for a seamless access management solution that enhances convenience. Rastel.io's app empowers parking managers with real-time control and visibility over their bike parking spaces. Usage can be tracked, access can be managed, insightful reports can be generated, and units can be remotely unlocked during emergencies. This comprehensive platform ensures enhanced security and streamlined operations. The app serves as a catalyst for change, enabling the creation of engaging campaigns that reward active cyclists and promote a healthier and greener urban environment.



BeTRITON: Fully electric RV

Value proposition



Fully electric amphibious RVs for the most sustainable and unique outdoor experiences. BeTriton combines an electric boat, a camper, and an e-bike.

Product details



BeTRITON is a Fully electric Amphibious RVs for the most sustainable and unique outdoor experiences. It's a floating hotel on wheels for 100 EUR a day. Each RV fits 2 adults and is the most nature-friendly/emissions-free RV on the market. It's on a mission to shift the way people travel and engage with nature. BeTRITON is perfect for a wide range of outdoorsy and green-minded user groups, such as families with kids, adventurers, couples, and wildlife enthusiasts. A robust B2B rentals-focused business model has been established. The company manufactures RVs, conducts testing through its rental fleet, and expands its operations by selling units to rental companies globally.





HOPU: Data analysis

Value proposition

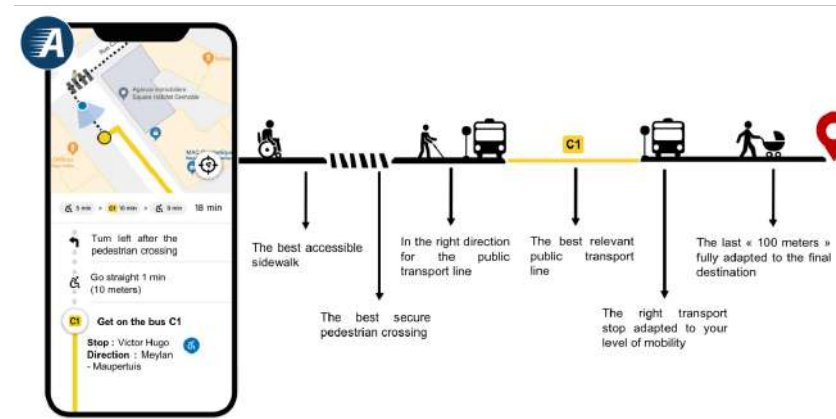


Hopu's SaaS is an evidence-based air quality solution with high accuracy and reliability in terms of data quality.

Product details



The SaaS offered by Hopu is specialised in environmental monitoring. It enables cities to collect, analyse and visualise a large amount of data on the real environmental state of the cities. A variety of parameters are collected, including air quality, pollen levels, noise and temperature. This visualisation service represents the collected data through different graphic representations: graphs, diagrams, heat maps, geolocation, maps, tables, colour codes assigned to levels of danger, etc. City managers will be enabled to efficiently manage and understand the status of the different monitored parameters. This will allow them to make informed decisions about strategic planning that ensures the sustainable development of their territory.



ANDYAMO: Multimodal route planner

Value proposition



Andyamo helps users to develop alternative solutions to private cars (walking and public means of transport) and improve the autonomy of citizens with reduced mobility.

Product details



Andyamo's solution is simple: They do not want to create a new GPS for people with reduced mobility from scratch but improve the local existing GPS of the public transport authority. They plug their route planner algorithm (API interfacing) to provide pedestrian and multimodal itineraries fully adapted to the level of mobility of each citizen (the elderly, families with children in stroller, people with disabilities). The focus is on providing precise pedestrian itineraries (precision of the sidewalk / pedestrian crossing vs in the middle of the road when using Google Maps or Apple Plans) for a more accessible, safe et comfortable experience for all.





Smart Spot

Value proposition



IoT device for environmental parameter sensing. The inclusion of all sensors in a single device provides savings in installation, maintenance and management costs.

Product details



Smart Spot is an advanced and robust IoT device that monitors a wide range of environmental parameters such as air quality, noise, and temperature. Using a single device, different data are measured to show the environmental and contextual changes in a city over time. A management software accompanies the device and is fully customisable. The Smart Spot covers the following parameters: Air quality monitoring - the air quality sensors are inside the device so that their integrity is ensured, and they are protected from adverse weather conditions; gas monitoring; temperature; humidity; noise; crowd monitoring; water or energy metering; Innovative Radio Environment Map (REM), which displays radiofrequency attacks or anomalies.



Rastel.io: Smart bike shelter

Value proposition



A smart and secure bike shelter, accessible through a mobile app that promotes active mobility by providing a safe parking space and also incentivises active mobility by rewarding cyclists.

Product details



Are you looking for a reliable and secure bike parking solution? Rastel.io's innovative smart and secure bike shelter, accessible through an app provides a seamless and hassle-free parking experience. Its compact design requires only half a car parking space, accommodating up to 6 bikes. Need a different size? Rastel.io's modular units can be customised to fit 4-8 bikes, tailored precisely to your requirements. What's more, these units can be easily linked together, creating larger shelters that adapt to any available space. With the app, cyclists can check real-time shelter availability, reserve spots in advance, and park securely once they reach the destination.



Get in touch!

Get in touch!





EQHAWK: Velomobile

Value proposition



Ecological 4-wheel hybrid bicycle, powered by human muscle and supported by an electric motor. The vehicle combines the advantages of a car and a bicycle.

Product details



The Velomobile is constructed using a lightweight composite material, protecting against adverse weather conditions and providing additional safety in case of collision. It is equipped with seat belts and LED lighting, significantly enhancing user safety. Riding it allows customers to enjoy all the benefits associated with cycling, such as using bicycle paths. Thanks to the hybrid drive, it is completely emission-free and allows for the adjustment of the effort required to move it. This type of drive enables significant savings on operational and service costs compared to road transport. The built-in frame provides additional space for a passenger and a spacious trunk, making it suitable for comfortable everyday use regardless of weather conditions.



Jonna Recharged

Value proposition



Jonna is an end-to-end online marketplace for buying and selling refurbished e-bikes.

Product details



Jonna sources premium used e-bikes from companies which are then refurbished and resold to consumers and businesses (re-leasing). Jonna's partners are large B2B fleets operating benefit bike programs and direct dealers/brands. Used e-bikes are resold to end buyers with a new purchase experience with inspection protocols, transparent consumer info on production guarantees that still exist, as well as offerings for service and insurance. Jonna only sources e-bikes with electronics which can be verified (diagnosed) and which are known for a long lifetime. Thus all e-bikes from Jonna come with a guarantee.





MIOO: Bike assembly service

Value proposition



Online bike resellers can partner up with MIOO and offer a professional assembly service to their customers. When the bike is delivered to a customer a MIOO Bike Buddy will go there to do the assembly.

Product details



Online resellers of bicycles now have the opportunity to offer their customers an excellent customer experience. At the check-out customers have the option to order a ready to ride service from MIOO. Benefits for online resellers are the following: higher conversion rates amongst potential customers who do not feel confident they can safely assemble their own bikes, fewer complaints and problems for service and support departments caused by customers trying to assemble bikes themselves, fewer returns since MIOO can remedy minor errors and replace any missing or defective components on-site at delivery. Benefits for the customer are the following: A convenient solution to get the new bike ready to ride and much more.



SEADS Blue Barriers

Value proposition



SEADS Blue Barriers - Cleaning rivers, protecting oceans!

Product details



Join the global fight against plastic pollution with SEADS Blue Barriers. Its patented tech is more than a solution; it's a commitment to cleaner rivers, thriving ecosystems, and sustainable economies: it's effective - collects 100% of riverine plastic; resilient - withstands floods, ensures consistent performance; it supports circular economy: turns waste into resources, covering costs. Protect tourism and fisheries: safeguard your region's economic pillars. Create local jobs; boost recycling rates: Make a lasting impact on your city's sustainability goals. For investors: this innovative technology is patented, proven and globally recognised.





SuperWheel

Value proposition



SuperWheel eco-assistance system enables cycling easier, faster and covers a longer distance without the hassle of a battery.

Product details



SuperWheel's mission is to offer a convenient, cost effective and sustainable power assistance system for micro mobility. SuperWheel transforms weight to rotational energy and provides unlimited range of power assistance without a battery and motor. SuperWheel makes cycling easier, faster, and possible to cover long distances without the hassle of a battery.



TruckY: Fleet management tool

Value proposition



TruckY is a patented software solution that reduces fuel consumption and emission by 30% in any road vehicle by optimising in real-time vehicle speed and acceleration based on the environment.

Product details



MinervaS is a university spin-off that offers innovative solutions in the energy and automotive sectors for the reduction of CO2 and on-board energy management. MinervaS provides a suite of integrated solutions for smart and future mobility, from driving advisors (TruckY) to fleet management tools, tailored to any propulsion. MinervaS' main technology allows it to define the context-aware optimal speed profile according to the real-time vehicle/route/driver info for both freight and urban mobility sectors. For logistics, TruckY offers a reduction in consumption up to 30% and the containment of the related polluting emissions by suggesting the optimal speed to the driver (and soon directly to the vehicle), without increasing travel times.



Get in touch!

20

21

Get in touch!





Libelium Air Quality Station

Value proposition



The Air Quality Station will allow your city to monitor key pollution parameters through Artificial Intelligence.

Product details



The new Air Quality Station allows the monitoring of the AQI to control pollution in cities and industries. Main features are: Measurement of the main air quality parameters: PM, CO, NO₂, NO, O₃, SO₂; maximum accuracy thanks to cutting-edge hardware and machine learning algorithm; noise level and meteorological parameters measurement; removable sensor cartridge for quick sensor exchange; communication via 4GReal-time data visualisation through Libelium CloudRobust, handy, and user-friendly.



Walk15.app

Value proposition



Walk15.app sustainable activity platform and Step Wallet helps companies, cities, organisations engage target audience in active mobility and improve their social impact.

Product details



Walk15.app sustainable activity platform helps companies, cities, and organisations engage target audiences in active mobility and improve their social impact. Activities (walking, running, bicycle and other challenges) are automatically generated on the platform and joined by participants in the #walk15 app. The app is free to use and works globally in 25 languages. By joining gamified activities, participants are motivated to collect steps and exchange them into special offers within #walk15 Steps Wallet: carsharing, micromobility, train ticket discounts etc. Customers can start from the first step and create their social impact story!





Wheel!: Cargobike subscription

Value proposition



All inclusive cargo-bike subscription service. Customers ride - Wheel! fixes the rest.

Product details



Wheel! is Europe's first cargo-bike subscription service. The company empowers the transition from cars to bikes in urban transport. The service includes a high quality cargo-bike tailored to user needs, insurance, road assistance, theft replacement and regular maintenance. The tech platform provides a frictionless user experience and drives operational efficiency. Wheel!'s core target is urban families and young, urban commuters. The platform can fit all forms of e-bikes, but the company's main focus is in midtails and compact cargo bikes, as this would be the new standard of cargo bikes. The company is currently developing new offers for new target groups, also within B2B and professional segments.



Zipforce Distance - eBike kit

Value proposition



Zipforce Distance is a portable and light easy-to-assemble electric motor that turns any bicycle into an electric bicycle with a fully charged battery is up to about 70 km.

Product details



Zipforce Distance is a new generation of e-bike kits to convert customers bike into an e-bike. It is quieter than the previous model and the range with a fully charged battery is up to about 70 km. With the new wireless sensor mounted on the pedal arm, installation is much faster than before. Everything customers need to ride electrically with Zipforce is included - motor, battery, charger, wireless pedalling sensor and bike mount.





Zipforce Slim - eBike kit

Value proposition



Zipforce Slim is a portable and light easy-to-assemble electric motor that turns any bicycle into an electric bicycle with a fully charged battery that lasts up to 40km.

Product details



Zipforce Slim is a new generation of e-bike kits to convert customers bike into an e-bike. It is the lightest on the market, quieter than the previous model and with a fully charged battery it lasts up to about 40 km. With the new wireless sensor mounted on the pedal arm, installation is much faster than before. Zipforce includes motor, battery, charger, wireless pedalling sensor and bike mount. How does it work? The wireless pedalling sensor is activated when users pedal and the motor provides assistance. With Zipforce, customers can cycle up to 25 km/h, which is the maximum speed allowed for e-bikes. Zipforce has an adjustable assistance level, so customers can set how much they want it to help power their bike.



Walking Talking

Value proposition



Drive sustainable social well-being throughout customers' organisation with Walking Talking's science based team development programme.

Product details



Customers make collaboration, communication and movement a daily way of working, to foster high productivity, innovation and wellbeing with Walking Talking. Subscribe to the app with clear step-by-step guides, tools and fun challenges to grow with Walking Talking. From the very first team session customers will start to experience the benefits. Each episode introduces a new module, featuring audio lessons, peer-to-peer reflections while walking and group sessions, all spread over a continuous series of three-week sprints. Customers receive weekly guidance for their development journey directly in their inbox.

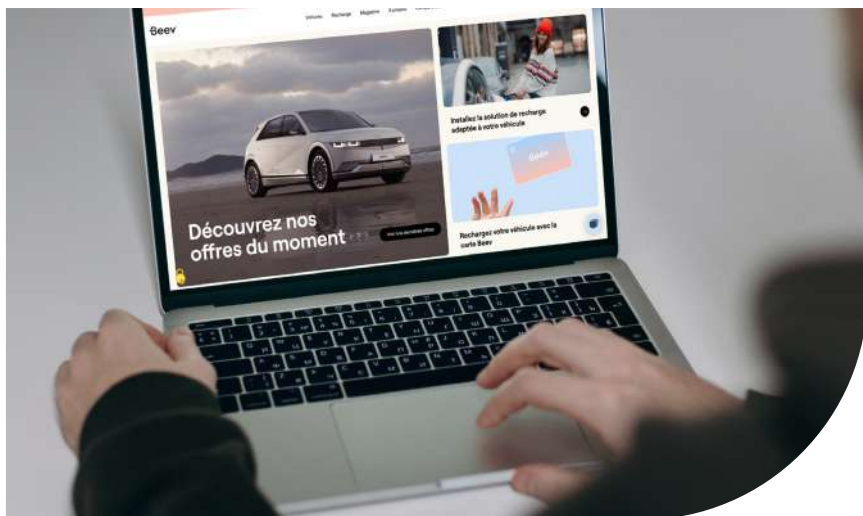


ELECTRIFICATION OF TRANSPORT AND ALTERNATIVE FUELS

Electrification of transport refers to the shift from traditional fossil fuel-based vehicles to electric vehicles (EVs) and the development of EV charging infrastructure to reduce emissions and promote sustainability in urban transportation.

EXPLORE ALL THE SOLUTIONS!





Beev: Electric car platform

Value proposition



Revolutionise the way users experience electric cars with Beev - the all-in-1 electric expert. Say goodbye to the hassle of researching electric cars, comparing prices, and finding charging solutions.

Product details



Embrace the future of driving with ease thanks to Beev - the ultimate all-in-1 platform for electric cars. Customers say goodbye to the headaches of electric car shopping - no more learning confusing electric jargon, scouring multiple dealerships, or searching for charging solutions. With Beev, customers can simplify the process, save time, and save money. Why settle for a complicated experience when customers can have a seamless one with Beev? Beev is the platform that facilitates the decarbonisation of business and household mobility. It offers a high-end service in order to acquire an electric vehicle and a charging station at home, in a company or in all types of public places.



Bia EV Data Services

Value proposition



Bia's EV data service enables businesses and public bodies to improve their EV charging offering or fleet operations they currently offer.

Product details



Bia analyses EV charging data to reveal usage trends (costs, CO2 emissions, peak loads, battery degradation), charging flexibility available for smart charging, and solutions for efficient growth. Bia provides powerful forecasting and simulations for EV load modelling, planning, and strategic future scenarios. The simulations enable customers to develop a strategic EV charging plan that avoids unnecessary costs and pitfalls. The dashboard also displays the optimisation potential customers could unlock by using Bia's smart charging algorithms in terms of: Peak loads reduction, charging costs reduction, charging CO2 emissions reduction, EV battery degradation attenuation and, response to grid events.





Bia Optimised EV Charging

Value proposition



The Bia platform can easily connect to all types of charging infrastructure, no matter the brand and model, as long as it has connectivity.

Product details



Customers can keep track of their energy costs and emissions, and benefit from custom autonomous smart charging. Bia developed a platform featuring high performing forecasting algorithms and a powerful optimisation engine to intelligently predict and optimise flexibility in EV charging. Bia's industrial protocols allow communication with EV chargers, stationary batteries and energy management systems. Finally, to guarantee the authenticity and integrity of the data, Bia's internal processes are registered in a ledger. So far, Bia's smart charging algorithms have been able to unlock up to: 80% reduction in peak loads; 50% reduction in charging costs; 70% reduction in CO2 emissions; and 40% reduction in EV battery degradation.



Circu Li-ion: Battery upcycling

Value proposition



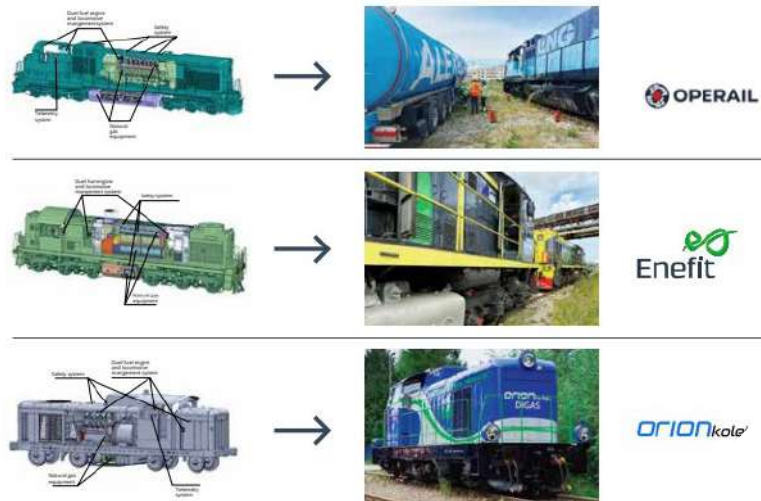
Automated battery disassembly and cell level diagnostics solution to enable a sustainable circular battery value chain through reuse.

Product details



Circu Li-ion is a battery upcycling company headquartered in Luxembourg. The company accelerates the green revolution by maximising the value of each battery enabling a truly sustainable and economical electrification of the economy. Today's recycling methods destroy multiple functioning parts of a battery, Circu Li-ion's automated battery dismantling and diagnostics solution recovers up to 90% of battery cells for 2nd life application and multiple clean material flows. The company reduces CO2 emissions significantly - an ISO 14044 standard conform LCA of Circu Li-ion's battery upcycling process shows a -48% reduction (max 50%) compared to a traditional battery lifecycle.





DIGAS: Hydrogen retrofit kit

Value proposition



Instant decarbonisation and compliance with ESG targets for rail operators.

Product details



DIGAS serves locomotive operators with instant solutions to decarbonise locomotive fleets in operation by retrofitting from diesel to biomethane (BioLNG and BioCNG) and now to hydrogen (H2). The company has deployed the first in the EU certified retrofitted diesel locomotives on both gaseous fuels, LNG and CNG and has received the special prize from Europe's Rail Joint Undertaking for Rail within the European Startup Prize for Mobility 2022. The product is quickly and simply installed onto a diesel engine converting it into an alternative fuel engine where environmentally friendly, clean, and inexpensive fuel (H2, biomethane in the form of CNG and LNG) is used to substitute polluting and expensive diesel fuel.



Elonroad: Electric road system

Value proposition



Electric roads extend driving range and reduce the need for large and heavy batteries, thus making electric mobility and transport more affordable and reliable.

Product details



Elonroad is a deep tech mobility company working with road-based charging solutions for all electric vehicles. Customers can charge their EV both while driving as well as when parked. It works for highways, city streets, ports, terminals and other closed loop operators. The solution has several smart, built-in features, including load balancing and billing operations. Moreover, for stationary charging solutions, the charging can be remotely controlled through the app, so the driver has full control of the status of the battery and the charging. Easy to install: It can be integrated into the asphalt or placed on top. It's safe: Only powers short one-meter segments at a time directly under the vehicle, ensuring a safe solution for the surroundings.





Inbalance grid: EV charging

Value proposition

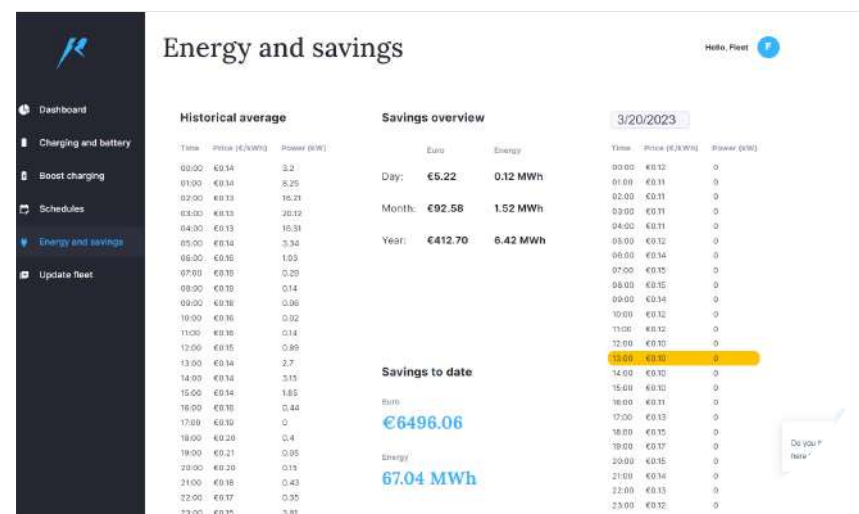


The solution allows installing charging stations in locations with limited power and scaling despite grid limitations. Reducing costs, increasing profitability, and entering challenging locations.

Product details



Having identified grid limitation as the major bottleneck for charging infrastructure development, the company has created an innovative solution from the ground up to be ready for mass EV adoption. Inbalance Grid is overcoming this barrier via a cloud-based, AI-powered dynamic load management technology, which allows to build more charging points with less dedicated power, avoiding unsustainable and expensive grid upgrades. The solution is software-based and is not limited to wiring and/or physical equipment. The cloud-controlled charger network can fill up EVs by taking the non-used power from the buildings or the grid itself and distribute that available power to multiple charging points so that each vehicle is charged at optimal speed.



RiDERgy: EV charging SaaS

Value proposition



Provide a scalable, flexible API-first software to EV owners and fleets to steer the charging process and achieve the lowest charging costs using grid-friendly green electricity and smart algorithms.

Product details



Renewable energy resources are volatile in production and prices. For successfully decarbonising electricity production and keeping the grid stable, flexible power demand and batteries are needed. EVs provide both. However, most EV owners don't leverage on this potential, struggling to charge with green energy and low costs. RiDERgy electrifies and charges fleets efficiently to accelerate EV adoption and 100% renewable electricity, achieving lower costs and less environmental impact for mobility. RiDERgy's SaaS platform offers an optimised charging schedule and dashboard, and steers charging using smart algorithms and flexible APIs to different systems like chargers, vehicles, inverters, meters and dispatching systems.





SimpleCharge: EV charging on lampposts

Value proposition



SimpleCharge offers an EV charging station which can be installed on any existing lamppost eliminating the need for initial installation costs.

Product details



For parking space owners, who want to get a new revenue stream on the increasing number of electric vehicles, and thus demand for EV charging services, SimpleCharge offers a new type of EV charging station which can be installed on any existing lamppost infrastructure and enable profiting within one day. The EV charging station comes with infrastructure (lamppost and parking space) monitoring tools in this way enabling seamless user experience in backend and frontend.



Electric vehicle with hydrogen range extender

Value proposition



Alkè Electric Vehicles is bringing the full power of hydrogen on the street. Test the ATX340E H2GO, a utility e-vehicle with hydrogen range extender.

Product details



ALKE ATX340E H2GO, a utility e-vehicle with hydrogen range extender, an innovative mobility solution developed to cover working scenarios in which EV operators or fleet managers have to manage unbalanced needs in terms of vehicle use. How Alkè hydrogen vehicles work: Hydrogen (H2) stored in the tank is injected into the FCH Stack; the Stack produces electricity and waste water (H2O); the electrical energy received by the Stack is stored in the battery; the battery powers the vehicle's electric motor.





Waybler Charging Solution

Value proposition



More EV car charging on the same power. With Waybler everyone will be able to charge their electric vehicle in a sustainable and affordable way.

Product details



A smarter kind of charging. Waybler's mission is to charge the maximum amount of cars without needing to increase power capacity. Waybler offers a complete solution for charging electric vehicles – Swedish-made charging box, unique load balancing, administration interface, statistics tool, associated app, and more. The company's charging boxes are optimised to charge the maximum number of cars using the electricity capacity available. Waybler's patent pending dynamic load balancing and power management avoids costly power peaks and ensures cost-effective charging of electric vehicles.



ZenSite: Smart charging

Value proposition



With ZenSite, SMEs and energy communities make optimal use of their energy assets and manage EV charging to reduce charging costs and maximise self-consumption.

Product details



ZenSite is an integrated solution for energy management and EV smart charging for companies and energy communities. ZenSite handles multiple sites and fleets and manages EV charging in response to the changing energy flows of the facility and the fleet's mobility needs. We support customers in making optimal use of their energy assets, utilise onsite solar generation to limit e-mobility's carbon emissions, or reduce consumption peaks by shifting EV charging to low-consumption periods. ZenSite integrates with a wide range of energy assets (solar inverters, EV chargers, energy storage units, meters) and provides a single dashboard to manage and overview all energy flows.



MOBILITY DATA MANAGEMENT

Mobility data management refers to the process of collecting, storing, analysing, and utilising data related to transportation and mobility. It involves managing various types of data, such as traffic patterns, vehicle locations, and user behaviour, to improve transportation systems and services.

EXPLORE ALL THE SOLUTIONS!





Meep: Open integration platform

Value proposition

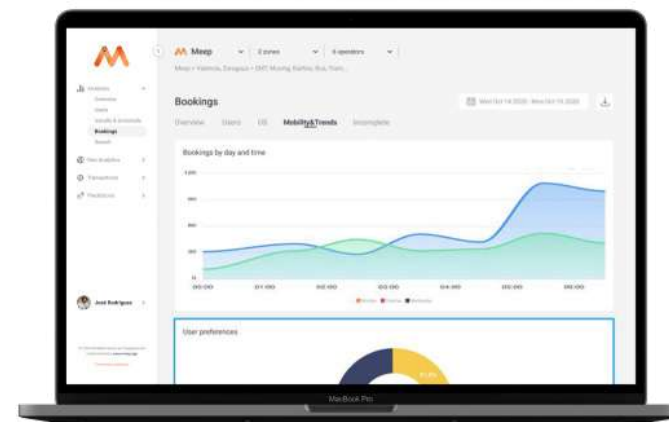


Meep offers a solution for customers' clients or citizens that integrates countless mobility providers and city services internationally in their new or already existing app.

Product details



Meep's modular, cloud-based platform with APIs/SDK connections allows them to offer a customisable and scalable solution capable of integrating all the data offered by any public or private transport operator. The deep integrations with transport operators include information, bookings, purchases, validations, prices and rates. With only 1 integration, Meep helps customers offer their citizens or clients access to countless mobility and city services in their new or already existing app.



MeePath: Data platform

Value proposition



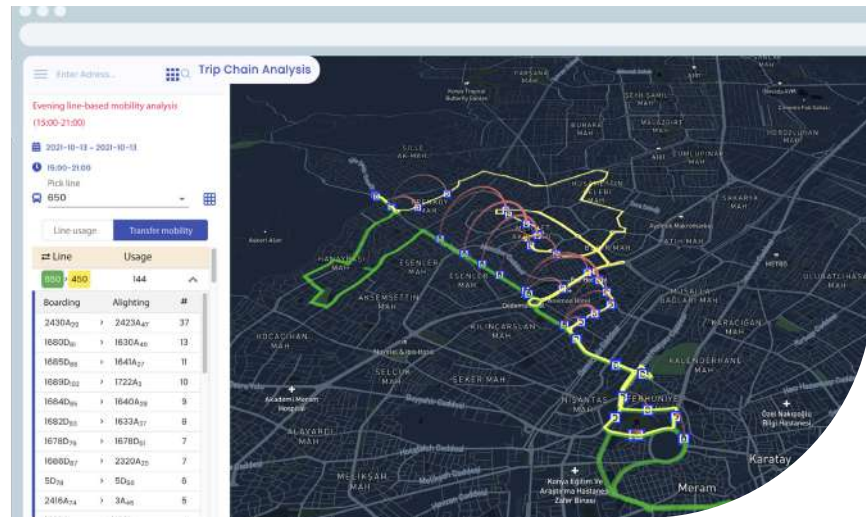
MeePath is a data platform that tracks, describes and predicts the behaviour of a city's inhabitants, providing the necessary information to take decisions based on the power of data.

Product details



A data platform that integrates private and public data (from users, mobility operators, city services and environmental information). The platform is able to produce conclusions, predictions and simulations, among other features in a dashboard. Clients have access to analytics, geo analytics, simulations, fleet management, support, user experience and financial data all in one platform. Public administrators use MeePath to understand how citizens move and consume city services to better understand how their cities work and how they can adapt them to their citizens. Private operators use MeePath to understand how people move, to better manage their fleets.





Cermoni: PT support system

Value proposition

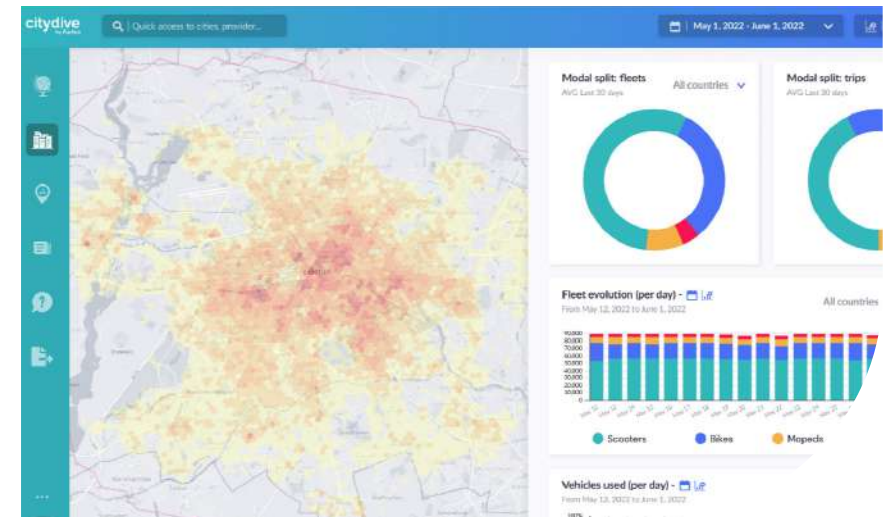


Make public transport preferable by increasing service level, meeting demands and making operations profitable based on data-driven decisions.

Product details



Cermoni is a big data based public transport decision support system. The solutions enables monitoring, evaluating and planning (with optimisation scenarios) of public transport by providing analytics (micro to macro) to understand travel demands and behaviours and optimisation capacity for efficient operations and strategic decisions. It aims to reduce costs, negative environmental impacts, increase service levels and meet passenger transport demands.



City Dive by Fluctuo

Value proposition



City Dive offers exclusive metrics on shared mobility data from 250+ services in 180+ cities.

Product details



City Dive allows customers to make decisions based on the big picture. Their team of mobility experts combines innovative data-collection methods with sophisticated algorithms to produce the most exhaustive and precise data on the market. Every day, City Dive analyses 250+ services in 180+ cities, giving operators the means to improve the performance of their operations, and help cities understand the role that shared mobility plays in their city, as well as the opportunity to benchmark their mobility ecosystems against others.



Get in touch!



Get in touch!



Cognata: Safety digital twin

Value proposition



Award-winning 4D urban safety planning tool for Vision Zero Initiatives.

Product details



Cognata's solution for road safety enables customers to test different traffic and safety scenarios, identify potential hazards and examine infrastructure alternatives to reduce the risk of accidents, as well as balance safety and traffic flow for all road users. Cognata creates accurate digital twins of real-world environments, complete with AI-based traffic agents for various road users. The company's platform generates large-scale traffic simulations and provides insightful analysis and reports regarding safety and traffic flow. With Cognata customers can now make informed decisions based on accurate data, leading to a smarter, safer city.



cyclebeeOnRails

Value proposition



cyclebeeOnRails combines official data of train companies, open source data and users' experience to simplify the planning of bike and train rides.

Product details



Sustainable travel made easy - the cyclebeeOnRails vision: Imagine you no longer have to spend hours searching the Internet to find out whether the train stations on your route have elevators big enough for your bike, whether your bike is allowed or has a spot on the train, which trains offer bike transport at all, whether you can safely park your bike at the station or whether you need an additional bike ticket on your desired connection. With cyclebeeOnRails you have all the important information at a glance and can plan perfectly. Whether you're planning a day trip, want to go on vacation by bike, or want to change your commuting habits, the info portal gives you the planning security you need.





The Pin Bike Kit

Value proposition



Verified movements and rides to incentivise citizens and commuters to use sustainable means of transportation.

Product details



Pin Bike allows municipalities to engage and reward citizens that choose to use bicycles, carpooling and public transports as their daily means of transportation. The solution relies on patented technology that, thanks to the hardware-software kit allows to verify movements and rides with an anti-fraud mechanism. The solution has three main objectives: Encourage citizens to be aware of sustainable mobility means; encourage proximity trade and support local shops (the rides done using Pin Bike devices can be traded with vouchers to be used exclusively with local shops); and provide public administrations with a digital tool through which they can monitor and plan traffic and urban mobility.



Data Flow by fluctuo

Value proposition



Visibility for shared mobility operators, simplicity for MaaS providers - connect to 250+ services in 700+ cities.

Product details



Putting shared mobility operators on customers' map. Convincing each operator to connect to customer's MaaS application can be tiresome. Operators don't always see the value in appearing on each and every MaaS application, which means users don't get an exhaustive list of travel options. Customers could save hours of negotiating with operators and connect to 250+ services in 700+ cities in one go. Data Flow API, trusted by companies like SNCF and Cogo, provides real-time information on all shared mobility options (bikes, scooters, mopeds and cars) in a given area, accessible through a single API.





dataJiro AI: People counting systems

Value proposition



With accurate and instant passenger occupancy data, customers can set the right number of vehicles, stops and drivers for each route. Costs decrease and passenger satisfaction increases.

Product details



The artificial intelligence model by dataJiro can find information such as the start and end of the journey, the number of passengers, vehicle speed and location with 99.9% accuracy. The artificial intelligence model developed has achieved extraordinary success as a people counting system not only in taxis but also in all public transportation vehicles. With dataJiro AI: customers can optimise the number of vehicles, drivers and stops on the route with live or historical data. Customers can prepare in advance by simulating according to different possibilities. Customers can also reduce costs while increasing passenger comfort and satisfaction.



DUMA: Dynamic urban mobility assistant

Value proposition



Creating accessibility by most accurate, local specific and up-to-date mobility information.

Product details



Dynamic Urban Mobility Assistant is a passenger-specific traffic assistant application that informs drivers of private vehicles and bicycles, public transport users and pedestrians about the most accurate information of real-time traffic and, incidents (road work, accident, traffic intensity, parking spaces, etc.). Real-time traveller information: Sustainable transportation to the cities as a culture; reporting mechanism that directly brings together city managers and citizens; multimodal analytics for data-based decisions; important step for the city's C-ITS platform.





Optiyol: Dynamic route optimisation

Value proposition

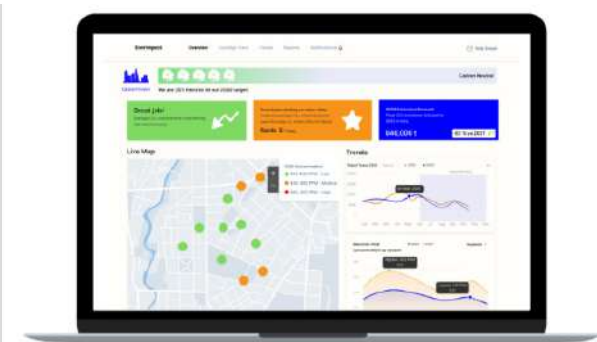


Optiyol is a B2B SaaS which helps retailers and carriers for end-to-end optimisation of logistics; from planning with advanced algorithms to execution with a driver app providing visibility.

Product details



Optiyol is a cloud-based delivery management solution that offers a route optimisation engine and a mobile driver app with live tracking capabilities for both dispatchers and end customers. Optiyol is used for automation and optimisation of last-mile operations in logistics, CPG, retail and e-commerce industries. Compared to traditional methods, Optiyol reduces last-mile transportation costs by 20%, improves on-time delivery rates by 30%, and increases end-to-end visibility of field operations.



Everimpact: CO2 measurement

Value proposition



Everimpact helps cities measure, reduce and monetise their carbon emissions using accurate and real time data from satellites, ground sensors and AI.

Product details



Cities represent 70% of emissions and only 1% of the voluntary carbon market. Without a proper solution to measure GHG emissions accurately, cities are struggling to finance their reduction projects through the carbon markets. Everimpact measures emissions accurately and in real-time with satellite imagery, big data and sensors. This helps cities: Measure carbon emissions and sequestration (urban trees and forests) in real-time, across the city territory; identify impactful GHG reduction opportunities and monitor progress of decarbonisation measures; automate data capture, save time in collection and reporting; finance certified reduction projects through carbon markets.



Get in touch!

Get in touch!





EVIO: EV management platform

Value proposition



EVIO is addressing not attended needs in the market through enabling operator and cross border interoperability, and making available in Europe a digital interface through a mobile app.

Product details



EVIO is a SaaS platform for the electric vehicle charging ecosystem, that provides differentiated services, ranging from the EV user to the EV fleet and infrastructure manager, while incentivises sustainable charging. EVIO promotes the use of renewable energy and efficiency in the use of resources, a connection between the mobility and energy worlds. The platform can be implemented at country level, cities, by operators, house condominiums, companies, parking lots, hotels, buildings, operators, supermarkets, fleet managers, etc. The EVIO platform was developed paying special attention to market needs to unlock the existing market barriers. The platform is open access, which means anyone can add their private charging station and monetise it.



FYMA: Unlock data from video

Value proposition



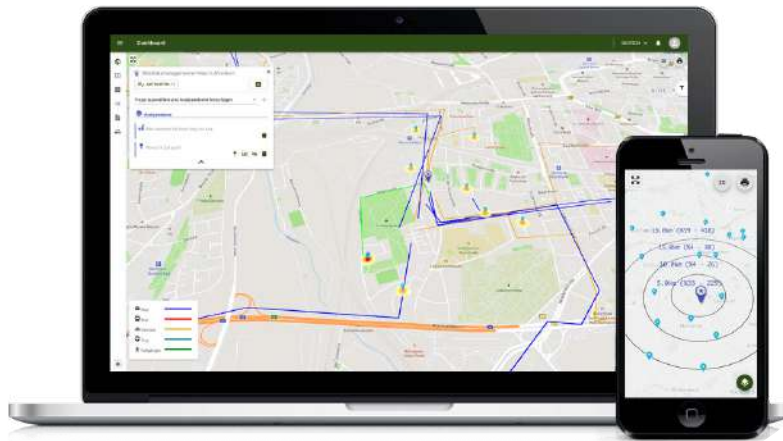
Customers can unlock the full potential of their commercial real estate portfolio with FYMA data and insights using their existing cameras.

Product details



Helping build better places with data: real-time occupancy, and mobility data and insights. Fyma is an urban analytics company that uses AI computer vision technology to retrieve valuable, anonymised data from video feeds. Fyma primarily partners with real estate developers and planners to help them use data to increase liveability, walkability, and sustainability in multi-use developments, green spaces, and streets. Customers will be able to track, monitor, and learn from the metadata analysed by Fyma AI. All this can be done using existing hardware unlock the potential of their CCTV and turn their cameras into a powerful analytics tool.





Mapalyse: Public participation tool

Value proposition

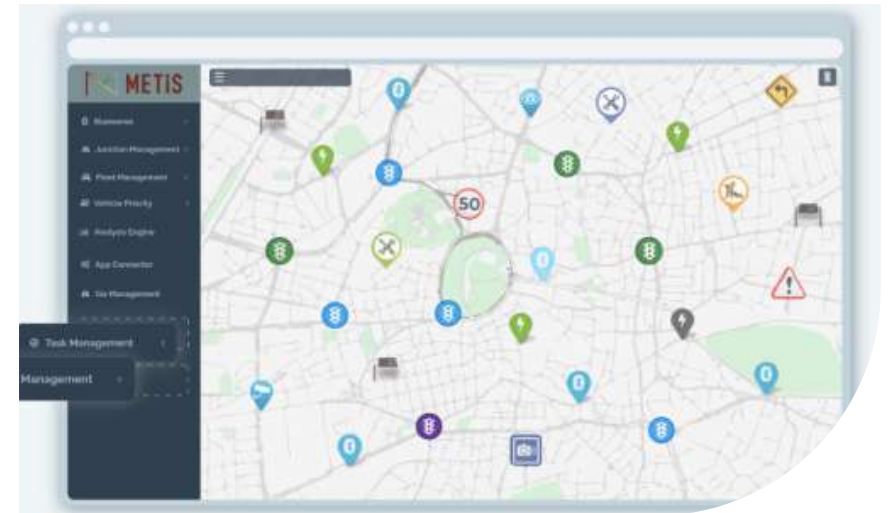


Increase citizen engagement by collecting public opinions to understand mobility behaviour and desires within map-based mobility surveys and analytics tools.

Product details



Mapalyse is a public participation GIS tool for the effective multimodal mobility management by mobility surveys and map-based analytics. Route drawing on the map by selecting the mode of transportation. Map-based analysis of settlements, preferred modes of transport, etc. in a fast and easy way. Analysing the locations of dangerous points that will threaten traffic safety on the routes and their effects on mobility behaviours. Usage areas examples are: Mobility behaviour analysis and management of employees for companies, institutions, etc; mobility behaviour analysis and management of students and parents, routes to school, etc. Potential danger points, settlements, etc. representation and analysis.



METIS: Mobility analytics

Value proposition



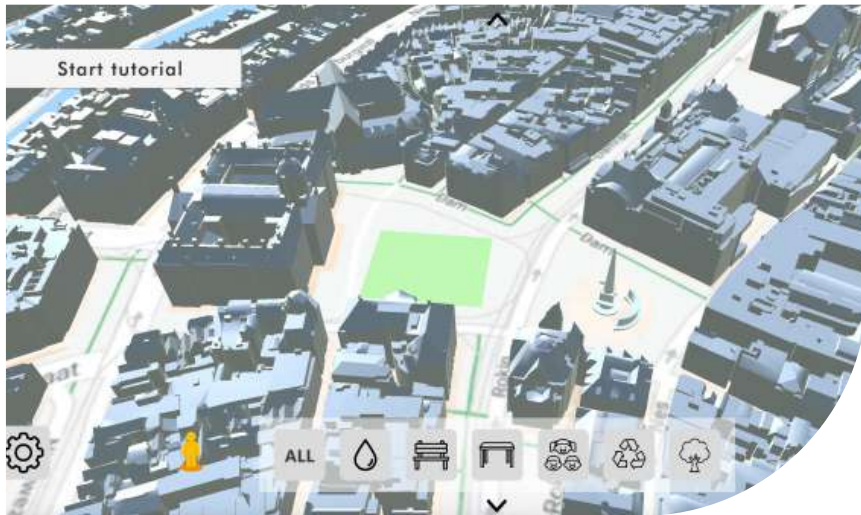
A full control effect on the traffic network to reduce congestion and make traffic management operations efficient with managing and analysing the mobility of the city from a single centre.

Product details



METIS is an IoT-based, interoperable central traffic management and analysis platform that collects mobility related data from different data sources and turns them into actionable insights. How can it help you? METIS provides traffic management, control and big data analysis on a single centralised platform. It offers full control and management over the traffic network; provides a reduction in traffic congestion and average travel times; provides rapid intervention by providing remote control of systems and devices in the field; reduces the negative environmental effects of traffic by reducing carbon emissions and, contributes to the reduction of material damage accidents in the traffic network with the possibility of rapid intervention.





ModelMe3D: Immersive co-design

Value proposition



ModelMe3D is the only co-design platform in the world where customers can easily build, drag and drop objects in a digital twin urban setting. Democratise the design of public and private spaces.

Product details



ModelMe3D is an immersive co-design tool. ModelMe3D allows citizens to participate, co-create and play a role in the design or redesign of public spaces. This product provides a digital twin of any urban setting allowing people to engage and participate in the process in a user friendly way. As city operations and administrative processes become more digitalised, the ModelMe3D solution is fit for the digital age, allowing people to take part in the public participation process. ModelMe3D machine learning provides valuable data analytics from all of the participations and submitted designs, giving the city and the lead project managers valuable information in order to make more informed decisions.



Mosaic 51: Urban mapping camera

Value proposition



Mosaic 51 is a reliable and robust tool with clear, high resolution 360° street level panoramas together with location data in a self-contained package.

Product details



Mosaic 51 is a robust 360° camera for mobile mapping, street view, surveying, infrastructure inspection, and related 360° imaging applications such as VFX and HDR light probes for CGI backplates. It has been designed and built from the ground up to be durable and future-proof. The characteristics are: 10fps h.264 (120Mbps per sensor); 7fps 12-bit compressed RAW (up to 8:1) in full resolution (coming Q4); onboard hot-swappable USB 3.0 storage; external storage over ethernet via NFS; high-end precision GPS with dead reckoning +/- 1 meter; 6-axis IMU (fully functional Q4 2022); sealed and water-resistant housing; protected lens, easily replace lens covers when scratched or smudged.





Mosaic Viking: High resolution cameras

Value proposition



22K resolution captures EVERY last detail, delivering the highest-calibre data possible map entire countries in extreme image resolution. Generate detailed 3D models of large-scale environments.

Product details



Best-in-class 360° mobile mapping camera with global shutter for 3D modelling, digital twin creation, and AR platforms. Designed and built from the ground up to capture the finest detail of extremely large spaces, in the most extreme situations. It is equipped with: six 31-Megapixel APS-C image sensors; global Shutter; equirectangular resolution 180MP; 12-bit uncompressed RAW images.



Mosaic X: Camera for 3D modelling

Value proposition



Mosaic X is a purposely-built, top quality mapping camera that allows accurate 3D reconstruction and colouring of point clouds.

Product details



Designed and built from the ground up to quickly capture image data and create 360° and 3D images, faster than any other solution. Ideal for photogrammetry, 3D modelling and mapping! It has global shutter sensors 6 x 12MP sensors and full pano 78 MP13K resolution. It's easy to manage (1 driver with almost no training). It does not require a computer in the vehicle. It can be Integrated with additional devices. All Mosaic cameras deliver exceptional quality photorealistic street-level image 360° data and reliably operational in harsh weather (temp: -10° - 45°) and climate conditions (humidity Range of 0-100%).





Mosaic: Mobile street mapping

Value proposition

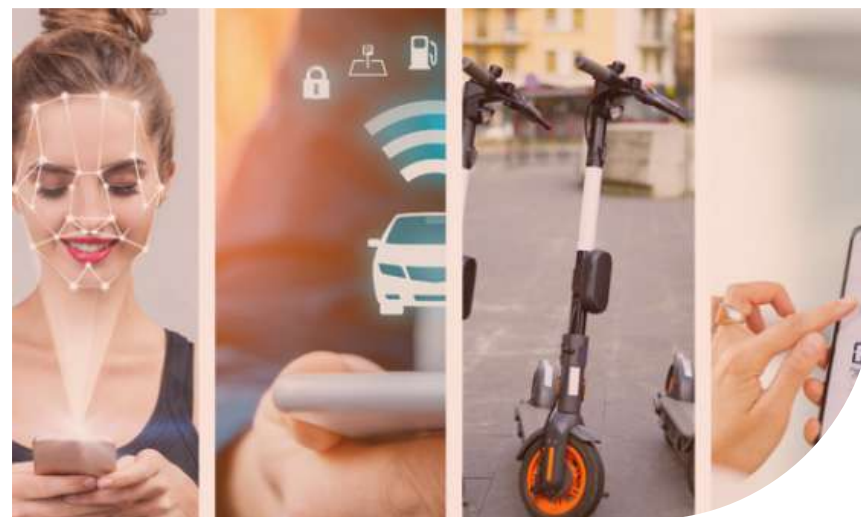


Mosaic's Mobile Street Mapping Service gathers large amounts of accurate data on desired areas. Geo-referenced images to create 3D models, digital twins, augmented reality (AR) platforms, and maps.

Product details



Governments and the private sector are increasingly demanding real-time, highly accurate street-level maps of their cities, spaces, environments, and communities. Mosaic's mobile street mapping services use the highest resolution 360° cameras, specifically designed and built for mobile mapping. Mosaic's mobile street mapping service can be tailored to specific needs. This service can include damage assessment, site monitoring or virtual surveying. It is a fitting solution for organisations conducting asset inspections, inventory collection, or surveyors that need a high level of image detail. Smart city planners urgently requiring data capture can benefit from the quick and efficient delivery of Mosaic's service.



Newky: Digital key for mobility

Value proposition



Newky converts a user's mobile phone into a digital key, providing a matching user and vehicle or access management system or tool, which saves companies time and money while increasing security.

Product details



Newky revolutionises access and use of vehicles, devices, and doors. By using biometric data and identification documents, and SMS verification, Newky converts the user's phone into a secured digital key. It's perfect for mobility-sharing companies, fleet companies, ride-hail apps, micro-mobility apps, access management systems, and public transport authorities. With Newky, companies save time and money, increase security, and make sure exact users are on board. Newky eliminates the need for physical keys, reduces the risk of loss or theft, and provides a secure and efficient way to access vehicles, devices, doors, and systems.





Safely: Road safety analytics

Value proposition

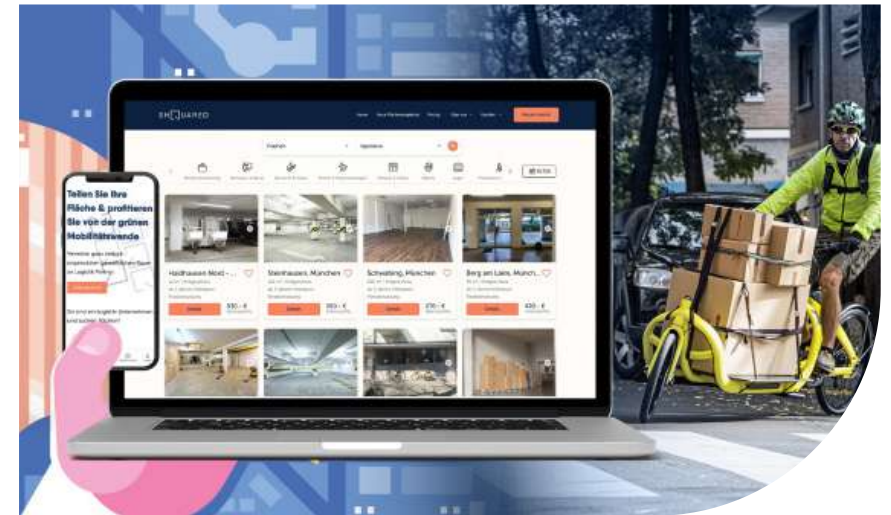


Increase road safety for all transportation modes by making effective decisions based on a data-driven solution.

Product details



Safely converts accident-based data and information into highly accurate analyses to provide a high accident density area for all road users (including vulnerable ones), road network risk ratings and cause-effect relationships to enable effective, data-based strategic decisions that will improve road safety.



SHQUARED: Micro-hubs for logistics

Value proposition



SHQUARED is a digital platform for micro-hub sharing. It supports the sharing of commercially usable spaces.

Product details



The advantages are obvious: resource-saving commercial use goes hand in hand with cost savings and a more attractive, liveable city. At the same time, the range of services for the city's population is expanded without the need for new buildings – a win-win situation, simply by sharing unused space. A pressing problem in Munich: in the future, traffic in the city centre is to be relieved and logistics traffic drastically reduced. Traffic and emissions can be reduced through climate-friendly last-mile delivery via cargo bikes. The transshipment points required for this will be created in existing areas through multiple use.





SpotBeam: Pedestrian safety

Value proposition



To improve pedestrian's safety and traffic control by leveraging mobile phones and connected devices for passive data collection while preserving people's privacy.

Product details



The SpotBeam technology is part of a system that includes detection of connected devices - WiFi, Bluetooth, Cellular, and V2X, sub-meter accuracy, multimodal alerting techniques for all road users, no necessary app installation, stand-alone solution, preserving people's privacy, simple and quick sensor deployment, not limited by Line of Sight (LOS) visibility conditions, and weather, and versatile insights generator for various verticals. The technology helps make the roads a safer place for walkers, joggers, cyclists, runners, and drivers.



TrueSight 1.0

Value proposition



TrueSight 1.0 enables machines to see the world built for humans in 3D. Long-term, this technology will fit in everyone's pocket.

Product details



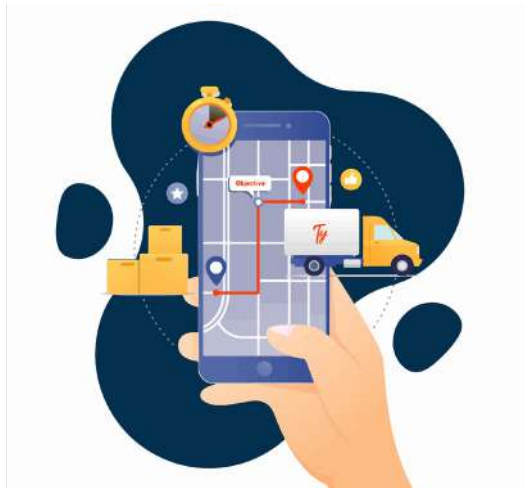
LightCode Photonics is developing a software defined camera that is resolving fundamental technical problems in 3D imaging. The company builds dynamic pixel 3D cameras designated for warehouses and intralogistics. A unique feature is its ability to detect small and dark objects for a distance of up to 10 meters. The camera sees objects that are 10 times smaller than the pixel size. The competitive advantage of the technology lies in the ability to enhance the performance of existing direct time-of-flight array sensors to the levels attainable to the newest premium quality sensors with high native resolutions. The technology can also be combined with both affordable and accessible commercial off the shelf sensors, and high-performance sensors available today.



Get in touch!



Get in touch!



Tymap: Fleet tracking platform

Value proposition

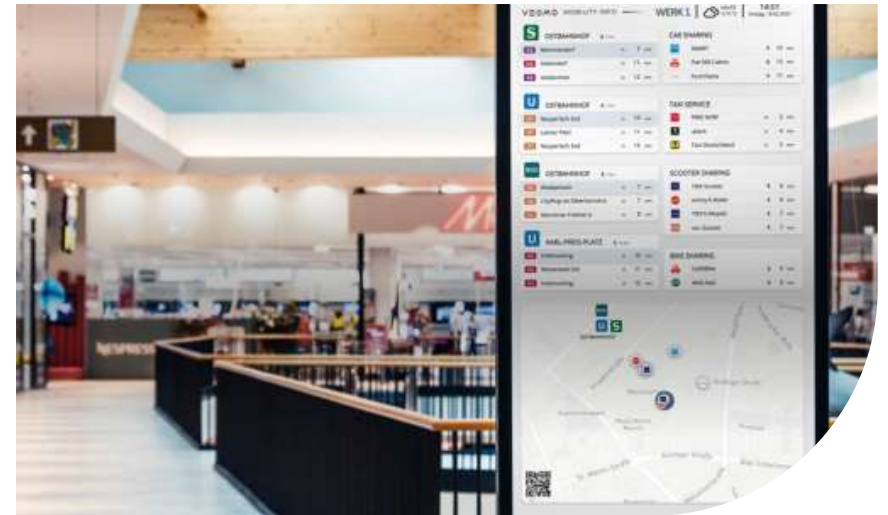


The delivery solution that saves you money and time. Tymap connects logistics companies with their customers in real-time.

Product details



Tymap is a logistics startup (B2B2C) that offers real-time order tracking. It addresses the challenge of green cities by reducing the carbon footprint by up to 60% and saving fuel. The platform connects logistics companies with their customers in real-time, addressing customer demands while optimising delivery processes. The proposal is characterised by its originality and innovation, with a primary objective of fostering positive changes in the current logistics landscape, ultimately enhancing efficiency and sustainability.



VEOMO: Mobility Monitor

Value proposition



With real-time data of local mobility options highlighted and easily visible in one place, VEOMO empowers people to make better choices for more sustainable mobility behaviour.

Product details



Many people do not know which mobility services are available in their local environment. The VEOMO Mobility Monitor simplifies access to information about available sustainable alternatives and shows all mobility services in real-time on monitors, screens or integrated directly into third-party apps. One screen, one look, multiple options to find the best one. On the VEOMO Mobility Monitor, customers can check out departure times and walking distance to close public transport stations, and shared mobility options, such as car-sharing, bike sharing or other on-demand mobility services. VEOMO pulls information directly from the service provider to inform about available options in real-time in one place.





Vianova Curb Manager

Value proposition



Vianova's curbside management tools enable cities to dynamically manage parking and loading zones to improve safety, reduce congestion and pollution, as well as repurpose space for new needs.

Product details



End the chaos of the curb and deliver on customers' priorities for public space usage. Vianova's curbside management tools support: curb mapping - customers easily inventory and visualise their curb within a single interactive interface. It also translates curb regulations into a single source of truth that can be easily updated and pushed via open data. It offers curb planning to analyse, measure, and improve curb usage to meet customers goals. Use Curb Manager to ingest and interpret customers curb usage data compared to their regulations.



Vianova Mobility Data

Value proposition



Enhanced user experience: data can enable businesses to improve the products and services they currently offer and therefore improve user experience.

Product details



Vianova Mobility Data provides reliable mobility data for the whole ecosystem. Users can instantly access, integrate, and share accurate mobility data streams from a growing set of global cities. Users can customise data requests and easily search through a data warehouse of real-time and historical data: 50+ mobility data connectors; dynamic and reliable mobility data streams from multiple sources within a self-service catalogue; users can search through a data warehouse thanks to easy queries and a plug-and-play interface; custom mobility intelligence; users can pull data from the platform to perform customised computations and visualisations; real-time data for MaaS initiatives.





Vianova Mobility Manager

Value proposition



Vianova tools aim to make mobility safer and more sustainable. Vianova's mobility dashboard enhances collaboration between cities and transportation services towards better sharing of public space.

Product details



Working with cities and mobility providers to better distribute and control access to public space, Vianova provides an operating system for the public realm. It enables seamless exchange of information between mobility providers and cities regarding traffic and curb side management. The main features of Vianova's Mobility Manager are: control and management; analytics and planning; audit and regulation.

Vianova Mobility Policy Auto-Tuner

Value proposition



Vianova Mobility Policy Auto-Tuner is a tool that can map carbon reduction potential across cities.

Product details



Vianova Mobility Policy Auto-Tuner enables cities and mobility operators to clearly identify areas where shared mobility can be deployed to maximise chances of modal shift from private cars. With this tool they can identify those areas where regulations or infrastructure should be implemented in order to nudge citizens into greater shared mobility usage; anticipate the 'alternative carbon footprint' of a trip that would be taken by a shared transport mode; model the potential impact of the policy from a CO2 perspective over time; monitor whether the implemented policies truly achieve the predicted CO2 emissions reductions; recalibrate the AI algorithm to suggest better regulations given the tracked outcomes.



Get in touch!

Get in touch!





VONZU: Last-mile logistics platform

Value proposition

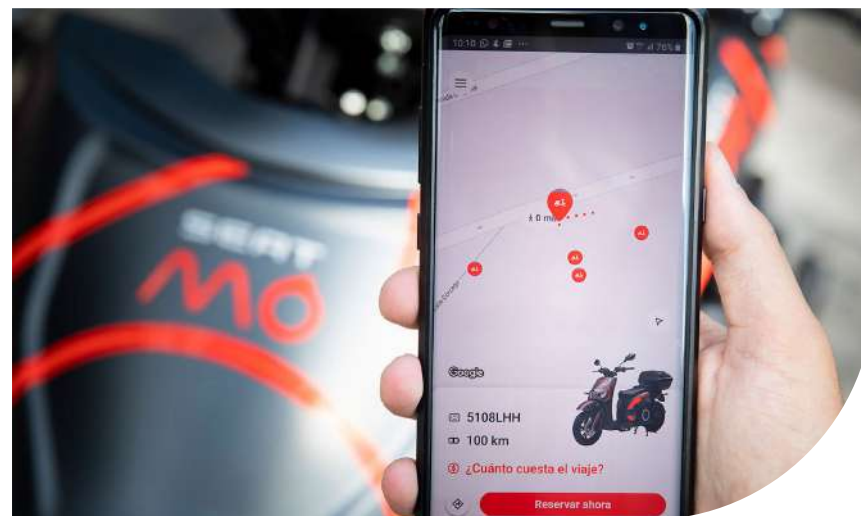


Vonzu's purpose is to digitise the logistics sector and give their customers full control of their supply chain to ensure that the delivery of their products completes an exceptional brand experience.

Product details



Vonzu is a software solution for logistics and distribution management. Vonzu creates a digital ecosystem that automates and optimises the logistics of retailers and logistics operators so that they have control of the best experience for their customers. Vonzu connects customers' partners and logistics processes through a single platform: It's customer-centric - customers connect their brand with their consumers, ensuring maximum satisfaction and transparency in deliveries; business driven: control the supply chain and make data-driven business decisions in real-time; simple: their system is quick to integrate and easy to use; and flexible - adaptable to the different realities of each retailer and logistics operator.



Giravolta Mobility Platform

Value proposition



The Giravolta mobility platform supports cities and companies to optimise their fleets, reduce environmental impact and improve traffic efficiency, including parking in cities.

Product details



Giravolta unleashes the power of shared vehicles and on-demand mobility solutions for innovative and forward-looking cities, operators and organisations. For Cities: It reduces vehicles - one shared vehicle is equivalent to 10 private; it optimises operations - transforms public transport with inefficient lines running with fixed schedule, to on-demand. All possible with our own mobility algorithm. Better planning: Creating a data ecosystem allows better service planification and urban organisation. See where rides (demand) are being requested and schedule your vehicles accordingly. For Companies: it reduces maintenance and operation costs by 50% for your internal fleet of department vehicles for your offices or factories.



URBAN LOGISTICS

Urban logistics involves the planning and management of the transportation and distribution of goods within urban areas, with a focus on efficiency, sustainability, and minimising environmental impacts.

EXPLORE ALL THE SOLUTIONS!





BRUNTOR: Last-mile delivery kick-scooter

Value proposition



The BRUNTOR is an electric kick-scooter with a cargo compartment for last-mile deliveries in urban areas.

Product details



This stand-up 4-wheel vehicle is simple and easy to use, with a load capacity of up to 600 litres. It is 65cm wide, and 140 cm long. Maximum load capacity is 100 kg, and driver weight – is up to 100 kg. On a single charge, it can ride up to 120 km. The cargo compartment is easily adaptable to customers' needs in size and volume it can carry. Independent suspension makes riding comfortable and the vehicle can be used on bad roads and cobblestone streets all year. It's perfect for seniors, reducing physical strain. BRUNTOR Cargo can be used on bicycle lanes and car-free zones and can handle obstacles up to 15 cm high.



Cargo-bike Parcel Box

Value proposition



Minimising the time required to transfer high volumes of parcels at cargo-bike hubs is crucial for establishing new sustainable logistics chains.

Product details



Parcels Boxes are built of glass-fibre, and able to accommodate the direct transfer of parcels loaded on a Euro Pallet. The time for transferring goods onto the cargo-bike is halved. The Parcel Box is compatible with GWW's XCYC Pickup, a modern and robust cargobike certified to various standards. Innovation is seen in details like the small rubber blocks that can be inserted in the rear side of the box to enable vertical positioning of the bike+box unit; this results in efficient storage and easier handling for bike maintenance tasks. Other details include the vibration dampers, the 3-point secure door lock and the side panels prepared for publicity.



Get in touch!

80

81

Get in touch!





geoFluxus: waste flows platform

Value proposition



geoFluxus helps customers to find better alternatives for their future waste processing, and provides insightful reporting.

Product details



geoFluxus integrates a lifecycle analysis methodology that helps understand the impact of transport and processing of waste streams. The analytical insights and surfaced alternative processors support the decision-making regarding supply chain sourcing and management. geoFluxus facilitates the circular economy by targeting the way in which companies use and dispose of resources. This provides the transparency that is currently missing in the waste-to-resource sector. geoFluxus gives users a powerful tool to simplify their waste management and boost their circular ambitions. geoFluxus guarantees customers: a smaller ecological footprint and greater financial results can go together.



Last-mile food delivery robot

Value proposition



Enhanced food delivery experience thanks to 21st-century robot couriers by reducing costs, making the process scalable, solving operational problems and making deliveries more eco-friendly.

Product details



The courier robot was created for companies dealing with logistics and last-mile food deliveries from restaurants, and for the restaurants themselves. Thanks to automation, the operator's decision-making will be limited to key moments, limited to receiving in the restaurant and issuing the customer's order, and overcoming pedestrian crossings. The market does not offer solutions that would automate the process on a massive scale and allow to meet the requirements of consumers.





Meight: Fleet management

Value proposition



Meight is the most advanced carrier software to boost profitability, scale operations and retain truckers. Meight's patented technology makes customers run their cargo on budget and on time.

Product details



Decarbonising road transport has proven exceptionally difficult due to a lack of suitable technologies. In fact, 65% of all the EU road freight companies are currently not using digital fleet management or telematics solutions to optimise their daily operations. Based on cutting-edge data science, Meight developed an intelligent telematics solution that allows road freight businesses to immediately reduce their carbon emissions by 20%, save fuel costs, benefit from full digitisation and safely transition to future-proof technologies such as electric HCVs. This solution uses machine-learning to optimise the efficiency of the entire fleet by improving, for the first time, each individual driver's performance.



ProperGate

Value proposition



ProperGate is a digital supply ecosystem that streamlines construction logistics, reduces urban traffic, and lowers environmental impact by connecting construction sites and material suppliers.

Product details



ProperGate is a material-centric online collaboration tool that automates delivery and on-site construction logistics management. By doing so, it eliminates waste of resources and coordinates material flow from suppliers to the site. The company also effectively allocates on-site equipment and tracks their usage, becoming the one source of truth about scheduled deliveries and delivered materials. Traditional construction logistics in urban contexts is uncontrolled, inconsiderate, disruptive, and wasteful. Delivery vehicles often arrive on site underutilised and cause traffic congestion. The company helps reduce these negative impacts by providing a digital ecosystem of connected construction sites and material suppliers.





Smart Point

Value proposition

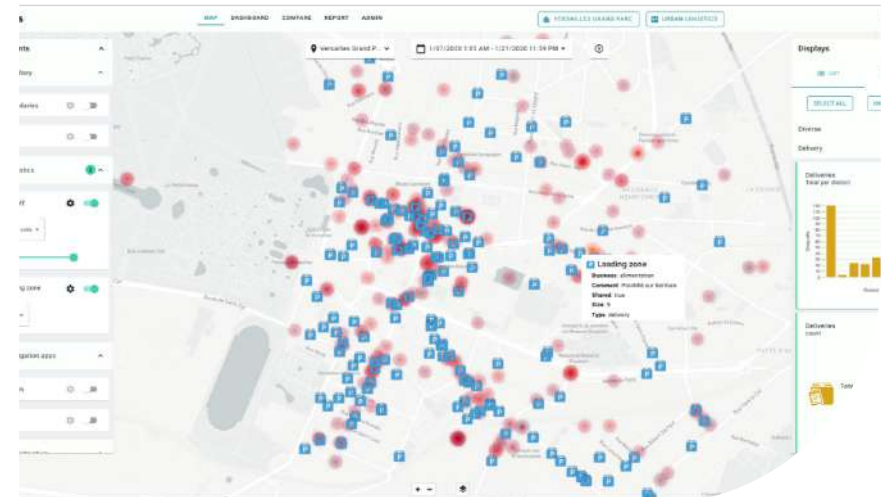


Smart Point designs zero emission delivery networks for smart cities. Micro neighbourhood hubs connected via a decentralised routing system, enabling all couriers to deliver 8x more efficiently.

Product details



Smart Point deploys technology and infrastructure that improves courier delivery efficiencies and motivates a transition to zero carbon fleets. Principally, the company works with e-commerce and freight forwarders, by pooling their parcels for last/mile couriers, so that they can deliver more efficiently to street-level smart-lockers, across Germany, Spain, Portugal, UK, Denmark, and the Netherlands. This is the future, a many-to-many solution, replacing the unsustainable home-to-home delivery option.



Urban Logistics

Value proposition



Benefit from a global vision of local delivery activity to implement policies for more efficient and sustainable urban logistics planning.

Product details



Decarbonise urban freight with Urban Logistics by Urban Radar. Urban Radar's cloud-based software aggregates real-time mobility and infrastructure data into a platform for planners. It provides visualisation, analytics, predictive features and works with different products. Urban Logistics by Urban Radar combines strong urban expertise and data platform technology to provide planners with delivery patterns and trends within cities. Understand correlation between loading zones and actual deliveries. Measure delivery volumes. Map available loading zones.



Get in touch!



Get in touch!



Urvis Business

Value proposition



Urvis Bike is an electric cargo bike, a comprehensive solution in the field of deliveries to the so-called last mile.

Product details



Urvis Bike offers an electric cargo bike based on a proprietary steel frame, available for sale, installation scheme, leasing or subscription model. It is the answer to congested cities, the need to speed up deliveries, generate savings and reduce carbon dioxide emissions while supporting business. The company designs, manufactures, assembles and lease/sells electric cargo bikes. Urvis has the capacity to produce vehicles with a short waiting time and various financial options.



Cargofive

Value proposition



Cargofive transforms freight forwarding with APIs, ML, and RPA, enhancing route selection, pricing, and quoting efficiency.

Product details



Cargofive is a leading freight management platform, streamlining the supply chain for freight forwarders. It centralises rates, quotes, and schedules, enabling real-time procurement, management, and quoting of freight prices. Cargofive's platform is transforming the freight forwarding industry by streamlining the process of identifying efficient routes, competitive pricing, and quickly quoting customers. This innovation simplifies what was once a cumbersome task into a quick and efficient one. Cargofive's platform enhances operational efficiency by directly connecting to carriers' capacities and prices via API and utilises Machine Learning and Robotic Process Automation for versatile file mapping.



PUBLIC TRANSPORT

Public transport refers to shared transportation services, such as buses, trams, subways, and trains, that are available for use by the general public. Public transport systems aim to provide efficient, affordable, and sustainable mobility options.

EXPLORE ALL THE SOLUTIONS!





Asistobe OPTIMISE

Value proposition



Make smart mobility decisions with Asistobe: cut OPEX costs by 15-25% while making transport systems more reliable and convenient and reducing cars and carbon footprint in cities.

Product details



The Asistobe OPTIMISE module provides customer-defined optimisations based on automated predictions generated in the PROGNOSIS module of the short-term real transport demand and passenger distribution (1 day – 1 month ahead). Customers can: Maximise or minimise the selected variable (km, costs associated with km, CO2, number of vehicles, service coverage, etc.). Estimate revenue and cost. Customise the optimisation scenario(s) based on service, carbon footprint and passenger comfort (set up constraints). Choose the solution that is the most feasible based on your knowledge. Asistobe platform offers public transport planners to EXPLORE how people travel, PREDICT future mobility, OPTIMISE, and PLAN their entire public transport networks.



Asistobe EXPLORE

Value proposition



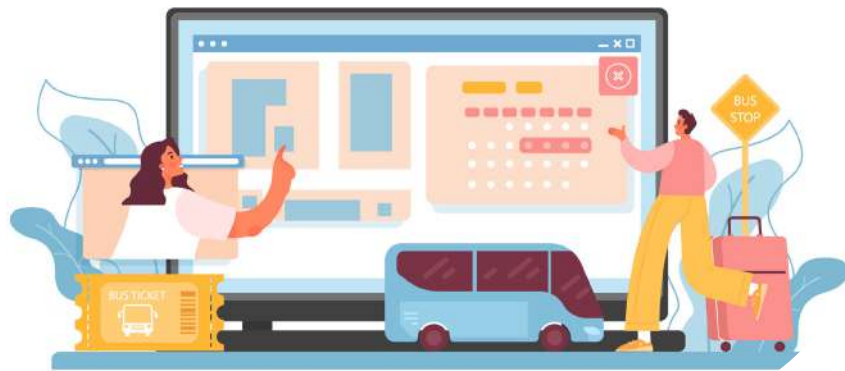
A visualisation tool for mobility patterns that helps cities understand the real transport demand, scan for inefficiencies in the public transport network, and get other mobility insights.

Product details



How deeply do costumers understand mobility in their cities? To provide a better understanding of how, when, and how people move in a city - by public transport, private cars, and micro-mobility, Asistobe collects and analyses multiple data sources, including GDPR-compliant telecom data. With the Asistobe EXPLORE module, planners can search, explore, combine, and visualise their data in real-time, monitoring their transport network (cost, occupancy, efficiency), and analysing passenger flow history, building solid insights for a more efficient transport system. Features: scanning historical mobility data for inefficiencies; identifying transport patterns across zones; understand the impact of events and major disruptions on mobility.





Factual DRT monitoring

Value proposition



The Factual DRT monitoring dashboard is a mobility planning tool that enables private and public entities to implement and monitor on-demand mobility services.

Product details



The Factual DRT monitoring dashboard is developed in AWS environment. The DRT dashboard provides: Visualisation and analysis of customisable indicators (e.g. satisfaction); DRT service monitoring based on a predefined list of KPIs; direct connection with the centralised DRT service; extraction of valuable reports for the city and/or the operator, possibility to gather data from multiple operators; comparison between different DRT services; evaluation of future DRT services. This dashboard will help responsible authorities to make informed decisions related to their DRT services.



OPTIMOB - Decision support tool

Value proposition



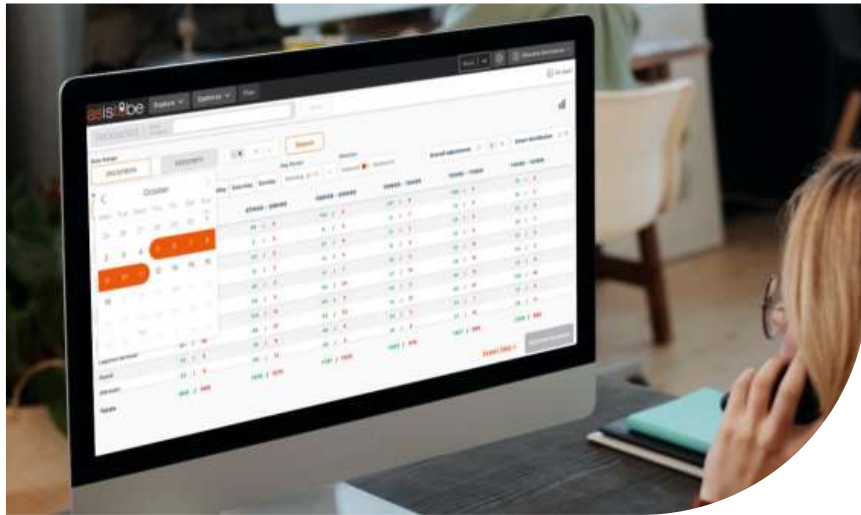
An accessible web-based tool to help bus operators -public or private- make the right decisions to electrify existing and new lines.

Product details



OPTIMOB is a web-based decision support tool to size your new electric bus line and charging infrastructure. Unlike in fossil-sourced propulsion methods, there is still no one-size-fits-all solution for electric bus operations in urban environments. The transition towards electrified bus routes therefore requires making multiple choices amongst the wide range of different technical solutions available in the BEV bus and charging infrastructure market. Currently available technical solutions are better suited for one or other use case. The key lies in thoroughly understanding the requirements of a to-be electrified bus line, and translating them into the technical enablers that will guarantee the best fit.





Asistobe PROGNOSIS

Value proposition



Get AI-based automated predictions about the next period's ridership and passenger onboarding/offboarding across the network for a specific line, station, and period.

Product details



How can AI-powered predictions reshape public transport planning? The Asistobe PROGNOSIS module provides AI-based automated predictions of the next period's ridership and passenger onboarding/offboarding across the network for a specific line, station, and period. Using proprietary deep maths and AI/ML algorithms, the module builds prediction models (scenarios) that can make robust predictions of future demand. Features: future scenarios building; analysis of special events impact (e.g., concerts). Scenarios can be adjusted with the customer's input.



realCity: Smart traffic systems

Value proposition



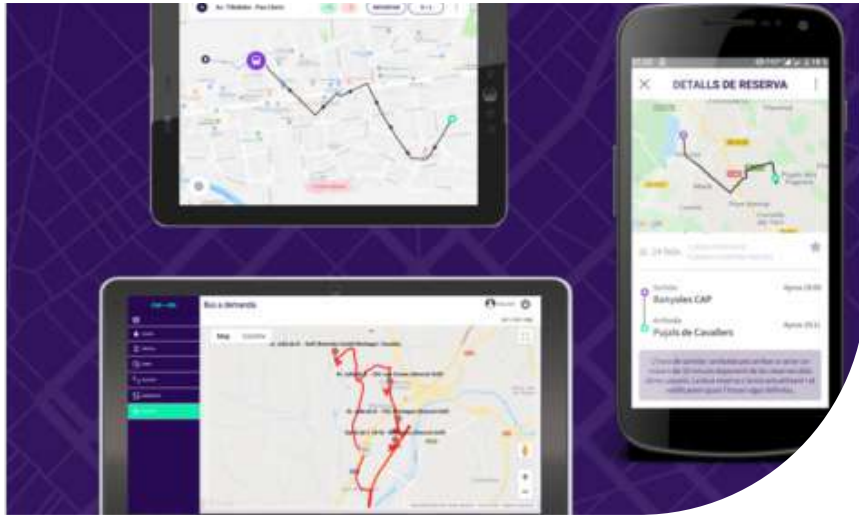
Cloud-based, intelligent traffic systems for drivers, dispatchers and passengers with rapid deployment and low initial investment.

Product details



realCity offers a modular, cloud-based traffic management and passenger information system. It is able to be an end-to-end solution or can be separately implemented and customised serving passengers, dispatchers and drivers. realCity drive is a software which can be used to easily integrate public transport vehicles into an online real-time traffic management and passenger information system. realCity dispatch is a web-based fleet management interface to supervise and manage vehicle and driver activity. realCity ride is a passenger information web and mobile app with multimodal trip planning, real-time data and micromobility integration. realCity replay is a fast and interactive traffic analysis and historical data visualisation tool.





**THIS COULD BE YOUR
PRODUCT...**

Nemi: Demand-responsive transport

Value proposition



Nemi makes public transport in low-density areas feasible by providing a software solution that enables flexible bus services.

Product details



Nemi is an on-demand transport platform. Nemi was created using space technology to solve an increasingly relevant social issue; accessibility to and efficiency of public transport services in contexts of low demand, that includes not only sparsely populated peri-urban and rural areas with no or very limited access to public transport but also off-peaks travel times in a more urban setting. Nemi is a tool for managing flexible bus services which include the deployment of fully demand-responsive lines; the hybridisation of regular lines by including request stops or operating them on demand during off-peak hours. With Nemi, public transport operators can optimise their services making transport more inclusive.

INTERESTED? Get in touch!



marketplace@eiturbanmobility.eu



Get in touch!

NEW MOBILITY SERVICES

New mobility services refer to innovative and often technology-driven transportation solutions that aim to provide efficient, sustainable, and convenient alternatives to traditional modes of transportation. These services often leverage digital technologies and data to improve mobility options.

EXPLORE ALL THE SOLUTIONS!





Bout: Water transport platform

Value proposition



Bout is a marketplace for boat rides and cruises. The application allows to choose a ride between predefined pick-up and drop-off locations to ensure a safe and easy ride.

Product details



Bout is a solution for maritime cities which aim to democratise their seaways for on demand rides. Bout makes the sea and maritime locations accessible for everyone, not just for those who own a boat. With the mobile app, users can order boat rides between different pickup and drop off points. Pricing is affected by the prevailing local supply. The app automatically calculates the price based on the distance travelled and the size of the boat. Bout is the platform for finding and providing boat rides and cruises. If users want to travel by water, then Bout is the right service for them.



Cezigue: App-builder for connected mobility

Value proposition



Cezigue is a web platform that provides the ability to build automotive connected services without worrying about vehicles compatibility while keeping control of release updates.

Product details



Cezigue has a no-code approach relying on technological bricks anyone can assemble in a fully functional app running on any vehicle. Cezigue takes care of the complexity of the ecosystem, so their customers are now able to build, release, and edit as easily as they would for a universal mobile or web app. Customers can play for free with the configurator as much as they want, imagining their own future solutions. Subscription starts only from the day of release. Cezigue aims to fit the global needs of both big actors such as major connected cities or main corporations, and the local ones, such as smaller towns and rural actors. Cezigue also does app development to customise their modules to customers' specific needs.





BUDDY Service

Value proposition



A one-stop-shop that facilitates information and booking of required urban support services from certified providers.

Product details



eAccessCare concept for a more accessible future urban mobility: eMarketplace for urban support and accessible travel services. A one-stop-shop that facilitates information and booking of required urban support services from certified providers: this includes adapted transfers, accessible accommodation, assistance care, assistive tech product rental, and accessible activities for all. An access key is provided, functioning as a facilitator, augmenting the quality of life and diversifying travel alternatives for those with differing accessibility requirements in urban settings.



Gotikket Booking Platform

Value proposition



Gotikket's vision is to empower users to make informed environmental decisions, by highlighting individual responsibility to make a positive contribution to the environment.

Product details



Gotikket provides transport solutions that are integrated into a single easy-to-use platform from which users can determine the best route and price across several end-to-end travel services and modes. As such, Gotikket aims for a smoother, frictionless, more efficient-booking and purchasing process. Gotikket offers the following advantages: Easy-to-use: Customers can book their bus tickets online through their easy-to-use app or website and without the need to register or set up an account; choose from hundreds of routes from partner bus operators. Users can enjoy Gotikket's special features such as filtering by CO2-emissions or the invite- a-friend functionality to earn free bus tickets.





Hyke: Smart City Shuttle

Value proposition



Hyke's mission is to provide cities with a mobility and transportation solution that utilises waterways in a cost reducing, sustainable, efficient, and enjoyable manner.

Product details



Hyke's Smart City Shuttle is a fully electric vessel meticulously designed to offer a seamless transportation experience. The vessel has a capacity of 50-70 passengers and is ESTR-IN certified, enabling all city-goers including wheelchair users, cyclists, and cargo bikes to enjoy the Hyke experience. Hyke shuttles are equipped with a condition-aware autonomous navigation system, which offers significant time and energy savings compared to manual operations. The shuttles are equipped with obstacle detection, route navigation, target tracking, and decision support technology. Hyke vessels can operate in complete autonomy. Hyke's mission is to move transport from crowded streets to peaceful waterways by creating a multimodal transportation network.



Scootable: Micromobility platform

Value proposition



Do not worry about the complexity of software and mobile apps, just focus on your operation and branding.

Product details



Scootable is a startup that develops software solutions for micromobility companies that launch their own vehicle sharing business. We provide turnkey solutions and save time, money, and reputation for our customers so they can directly move forward with their business. Scootable provides mobile apps, admin panel, and IoT communication platform for shared mobility companies as a turnkey system. The system is already integrated with most of the IoTs used in the market and can be integrated with any other IoTs that is chosen by the customers so there is no need for a fixed model of IoTs for companies to work with us.





Karos Mobility: Carpool platform

Value proposition

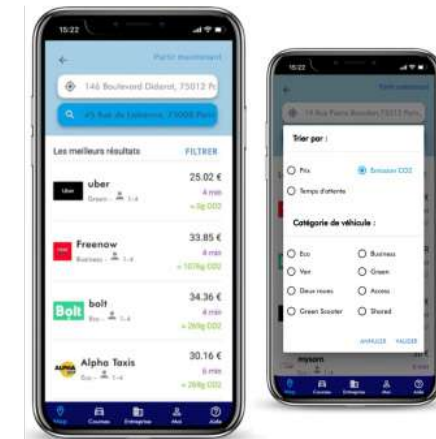


Karos is the best AI-powered carpooling mobile app that offers optimised door-to-door itineraries. With Karos, carpooling becomes reliable, flexible, and seamless, just like taking public transport.

Product details



Karos Mobility offers the most reliable carpooling service for daily trips in Europe, mostly for rural and suburban areas, where driving a car is most of the time the only solution. To do so, Karos Mobility works with companies willing to develop a carpooling service with exclusive benefits for their employees. Karos Mobility also collaborates with local authorities to set up a carpooling service adapted to the needs and specificities of their area. The Karos Mobility carpooling app also helps to reduce CO2 emissions for companies and regions in a significant way (13,600+ tons of CO2 emissions avoided since the creation of the service).



The Good Seat

Value proposition



Transforms users' platform into a global mobility hub with real-time ride options, boosting revenue and delighting customers.

Product details



Elevate customer experience with The Good Seat's white-label distribution solutions. Real-time ride options: Access their extensive network of ride-hailing and taxi service providers, including Uber, Bolt and FREENOW, all within their platform. Effortless payments: Their user-friendly payment system streamlines transactions, ensuring a seamless experience for customers. Global coverage: Reach a worldwide audience with their extensive network of providers (130+ countries, 5M drivers). Boost revenue: Earn commissions on every ride and foster customer loyalty with enhanced services. Effortless integration: Their white-label solutions seamlessly fit their platform, providing a smooth user experience.





TicketO: Shared mobility wallet

Value proposition



Ensuring that traffic-related pollution and CO2 emissions are reduced by financial incentives, TicketO manages the carbon tax refund considering the actual carbon footprint of the end user.

Product details



The Environmental Shared Mobility Wallet automatically tracks the carbon footprint of its user, and can be used for all public transport and shared mobility services. The app was developed for companies to better manage their transportation budgets offered to their employees for tax refunds and special incentives. In addition, the Environmental Shared Mobility Wallet supports the necessary filing of invoices of the end users for the tax return together with the reporting on CO2 emission reduction.



MaaS Solution

Value proposition



Meep is an urban mobility platform that integrates all modes of transport and provides users access to multimodal transport and sustainable routes based on their preferences.

Product details



Meep's MaaS solution offers a digital mobility ecosystem for operators and cities. The platform with integrated mobility and smart city services includes a multi-modal app, and a data platform to understand how users interact within the ecosystem. Users can plan, book, and pay for trips in a single transaction, avoiding the use of multiple apps.





Volvero: Vehicle sharing platform

Value proposition



Volvero creates a system in which whoever has a car, motorcycle or even a commercial vehicle can also lend it to someone else when they have no use for it.

Product details



Volvero connects vehicle owners and drivers to take advantage of underutilised vehicles and provide an extensive range of efficient mobility possibilities to drivers. At the same time, owners - both private and commercial - can significantly reduce their vehicles' costs and make the ownership feasible. Secure and economic sharing of private vehicles. Vehicle owners have total protection over their vehicles, 24/7 assistance, and the Volvero tailor-made insurance. Drivers can find vehicles directly from their smartphone around them that match what they are looking for. Volvero reduces the number of private vehicles, while owners can monetise their vehicles. A win-win situation for cities, car owners, and citizens.



WAIIS

Value proposition



A personal chauffeur for customers' daily commutes. Affordable and sustainable.

Product details



WAIIS transforms urban mobility by providing the first marketplace blending ride-sharing and carpooling in the EU. WAIIS combines riders, private drivers, and professional mobility providers in a single connected formula: If the customer is a rider, they can type their destination or daily work commute and find the best ride-hailing or carpooling options. And if they are a private driver, they can upload their commute once to their platform and receive free ride credits and connection to WAIIS riders to share their commutes and expenses.





STACK: The next generation MaaS

Value proposition



All-in-one white-label Mobility as a Service (MaaS) app enables cities and territories to manage, facilitate and monitor the mobility of their citizens, and to directly communicate with them.

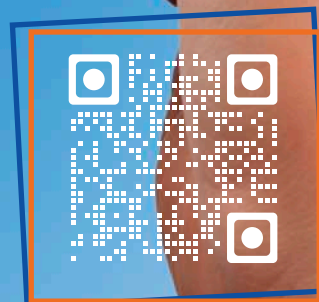
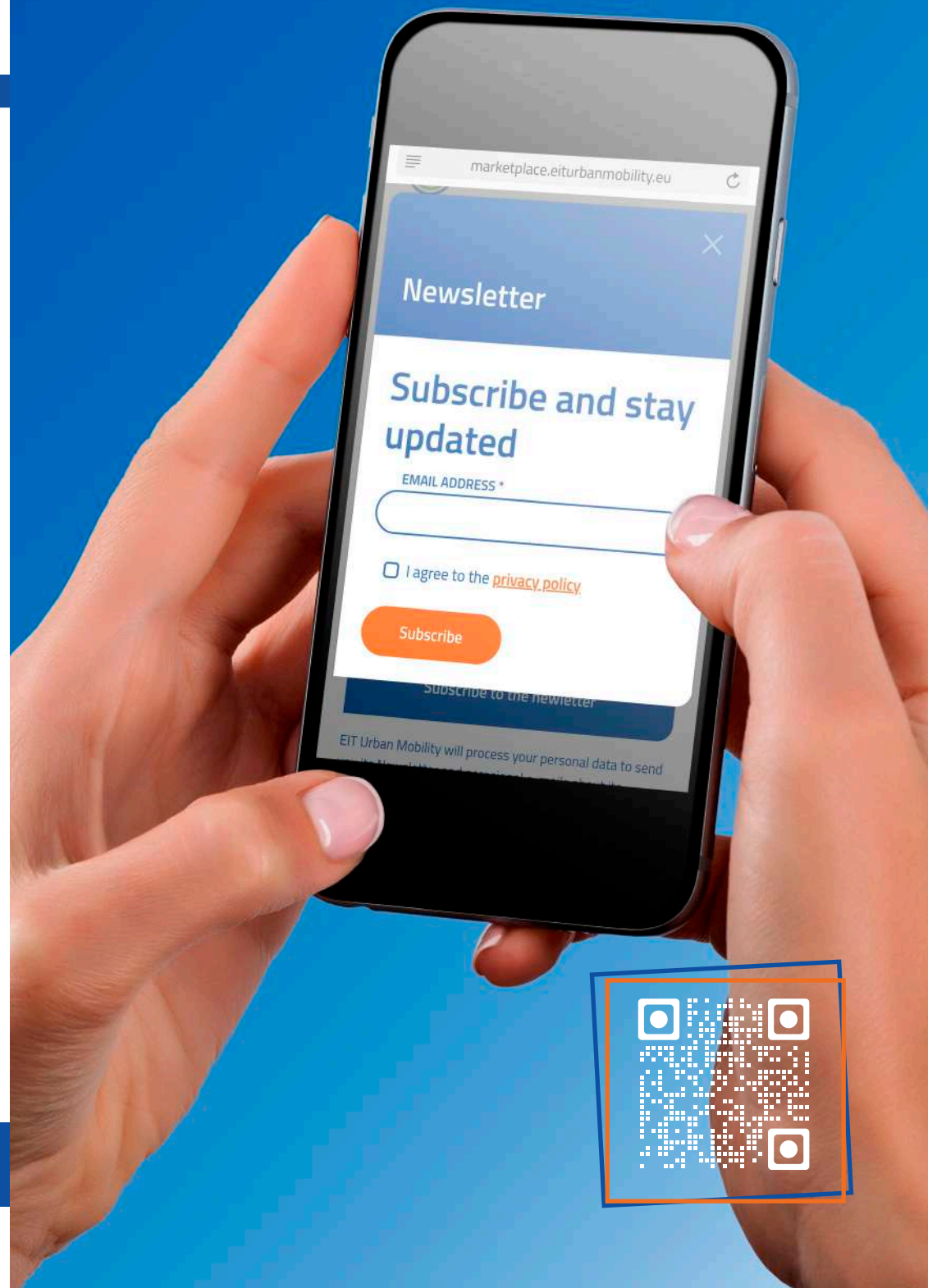
Product details



Instant System develops white-label MaaS apps for transport authorities and operators, enabling them to meet the daily mobility needs of cities. Stack offers an all-in-one solution that allows users to plan, book, access, and pay for all transport modes available in an area within a single app. It includes: optimised passenger information; a multimodal/intermodal and predictive journey planner; integration of the main available transport modes; real-time schedules and disruptions; and integration of external ticketing solutions. MaaS ready e-shop as a marketing tool of the mobility offer; Unique payment of "mobility packages".



Get in touch!



PARKING AND CURB SIDE MANAGEMENT

Parking and curb side management involve the planning and regulation of parking spaces and curb side access in urban areas to optimise space utilisation and reduce traffic congestion.

EXPLORE ALL THE SOLUTIONS!





Libelium Smart Parking Sensor

Value proposition



Dual detection technology for 99% accuracy in identifying parking space availability.

Product details



Smart Parking is a radar sensor device that allows the detection of parking availability indoors and outdoors. Libelium has integrated radar technology in detecting the availability of parking spaces aiming to meet the growing demand for greater precision of smart parking devices. The new smart parking node improves detection and stability performance thanks to a radar sensor that allows precise detection (99%) of vehicles parked over the device.



Belat: Locker for micromobility

Value proposition



Belat is the right choice for orderly indoor and outdoor micromobility parking.

Product details



Belat is a product that is committed to micromobility and personal mobility vehicles (PMV), for orderly use and parking. Belat is a 3-door module for storing and charging e-bikes, e-scooters, or e-skateboards. Each of the spaces has a schuko EU plug and two USB sockets with ACT to charge all devices. Each module is supplied in three pieces to be assembled and connected to the power line, with a maximum of three columns per conventional power line. Belat is a modular solution, perfect for maximising space inside buildings. Very easy to install and maintain. Ideal for building entrances, receptions or indoor areas. Belat has an anti-corrosion galvanised steel structure. It is compatible with a wide variety of electronic locks.





Bichangar Rocket

Value proposition



Bichangar Rocket is a unique solution to accelerate the change towards sustainable urban mobility by eliminating a major barrier: the absence of secure parking options for bikes and scooters.

Product details



The Bichangar Rocket is a smart, modular, and scalable parking solution for micromobility in cities that protects bicycles and scooters from vandalism, theft, and inclement weather. The Bichangar Rocket is completely digitised, which allows a considerable improvement of the user experience by being able to offer monthly subscriptions or pay-per-use. The user accesses it through an app instead of using a physical key or card. Bichangar Rocket is designed to occupy half of a car space, which makes the solution scalable using car parking spaces, instead of pedestrian curb space. The system is also completely autonomous avoiding construction works or connections to the power grid. It can be easily installed in less than an hour.



Citizen's Needs

Value proposition



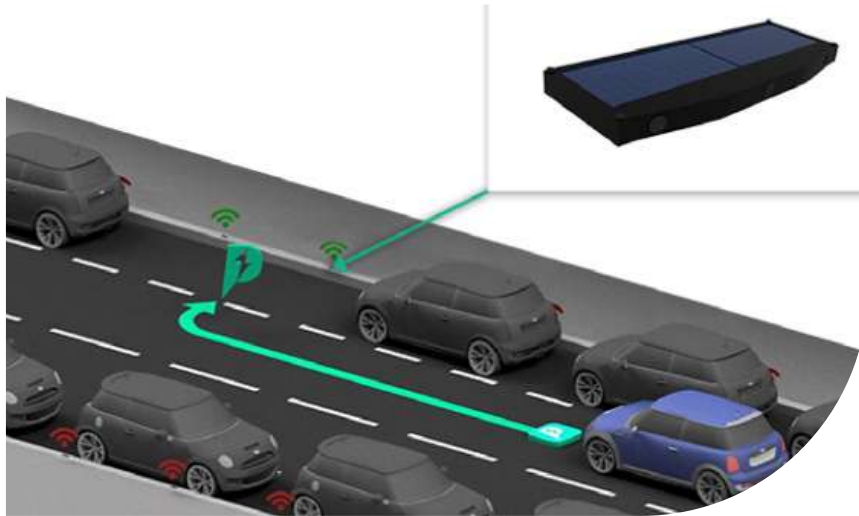
Proximity based urban planning and 15-min city to meet citizen's needs.

Product details



Cities are placing proximity-based urbanism at the centre of their policies to answer citizen's needs. To satisfy the needs of city dwellers and to inform local strategies (sustainability, development, mobility plans), the economic development must answer many questions on a daily basis about the proximity of public services, shops and local civic life. Urban Radar offers Citizen's Needs® to answer these questions. Economic development, sustainability and mobility teams now have the tool to diagnose and evaluate the territorial resources composing the municipality: service catchment areas: walkability scores, and neighbourhood access to essential services.





Flash Park

Value proposition

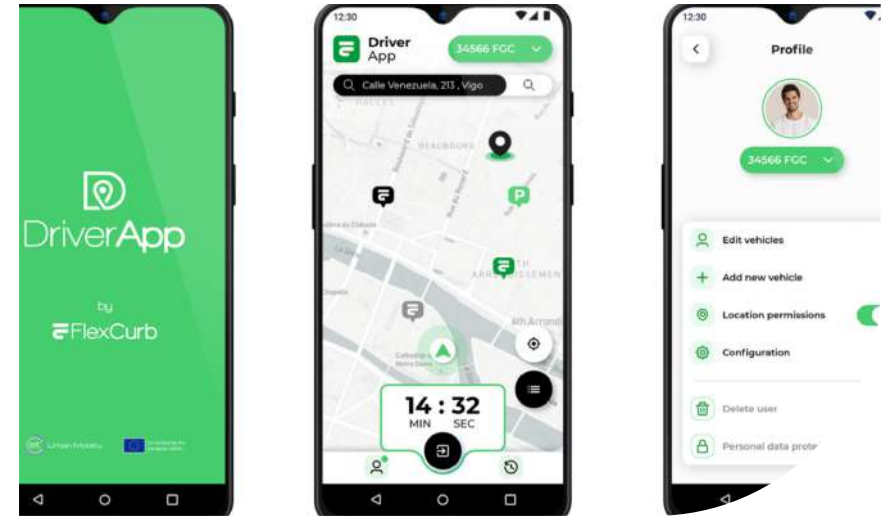


Flash Park monitors parking in non-delimited areas. The solution offers mapping of available real-world space with connectivity between the driver and the monitoring sensors.

Product details



Flash Park provides a revolutionary solution to efficiently find parking spots in the streets of crowded cities using a network of renewable energy-powered parking sensors. With the usage of cutting-edge technology, these sensors can leverage 5G connectivity to identify free parking spots in real-time and expose this information to third-parties using an own integrable API. Further, the solution includes specific features to detect unauthorised use of protected parking spots, as for instance, those reserved for disabled permit holders, in order to ease accessibility and inclusivity. Flash Park is the only parking/monitoring solution that is meant to be for on and off-street parking, regardless if there are delimited parking spots.



FlexCurb Driver

Value proposition



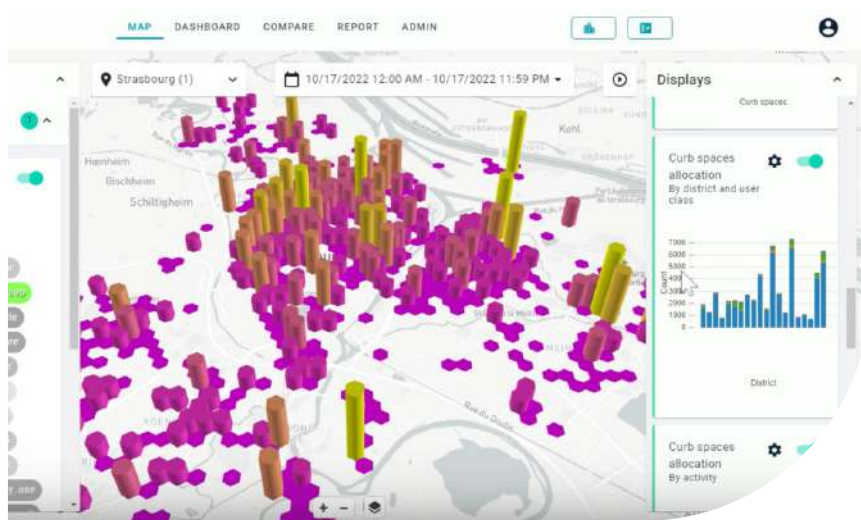
Equip drivers with better access to loading zones. Reduce emissions. Double parking. Improve city's understanding of curb needs.

Product details



Decarbonise deliveries with FlexCurb Driver app by Urban Radar. FlexCurb Driver app facilitates easy access to loading and unloading zones for freight drivers. By assisting daily operations, drivers locate and use the most suitable and closest parking spaces to their destination while ensuring compliance with local regulations. When integrated with Urban Radar's FlexCurb Planning, cities gain a better understanding of the patterns of use of loading zones to refine curb allocation, improving logistics efficiency and use of curb space.





FlexCurb Planning

Value proposition



Streamline decision making on curb planning. Digitise curb and parking regulations in a central inventory. Identify and balance curb supply to city goals. Communicate curb regulations effectively.

Product details



Diverse and often conflicting uses of street curbs are increasingly common trends. Curb uses such as loading zones, long-term parking, bus stops, or bike parking need to coexist to achieve an inclusive and efficient use of streets and public space. FlexCurb Planning centralises curb supply and demand data into an intuitive platform, revealing how curb space is allocated and used. Policy and decision-makers gain valuable insights to improve access and efficiency, and reduce emissions related to curb and parking space. Cities are using the platform to inform mobility plans and strategies and answer questions such as: is my city ready for the EV revolution? do my loading zones match the e-commerce surge?



Fret Impact by Urban Radar

Value proposition



Key data metrics and visualisations for cities, regions and towns to understand local freight traffic, inform public policy decisions and improve air quality.

Product details



Studying vehicle flows is essential to understand their impact and identify consumption patterns. Everyday, thousands of vehicles hit the road to deliver goods, load shipments, go to work or shopping. These activities create externalities (congestion, air quality, noise,...) but also tells customers about their economic way of life. In order to take informed decisions on land development, reduction of greenhouse gases or access to goods and services, customers first need to understand vehicle flows. Fret Impact® provides a unique vision of vehicle flows on a given area. With their IoT ecosystem and data providers, they aggregate and visualise data in a simple way for every urban planner, land manager and economic developer.





Luna: safer micromobility

Value proposition



Provides irrefutable visual proof of real-time location of e-scooters/e-bikes, allowing operators to eliminate sidewalk riding, collisions, and disorderly parking.

Product details



Where and why does errant behaviour happen in your city? You would need visual data to really understand this. Luna applies computer vision to understand and appropriately eliminate the root causes of three core dangers of shared mobility schemes: sidewalk riding, collisions, and disorderly parking. Luna enables cities and operators to work together with context. Is someone mounting sidewalk on purpose? Automatically reduce speed and penalise. Is it due to fear? Educate, reroute, and incentivise. Context allows us to learn and fix core behaviour or infrastructure deficits causing errant vehicle use. Beyond safety visual proofs provide insights on how carless infrastructure should evolve based on rider use.



MOSA: Smart cycle parking hubs

Value proposition



MOSA's smart cycle parking hub solution is 70% cheaper, saves space owners time by automating parking management tasks, helps them to comply with the government's net-zero initiatives and attract high-value tenants.

Product details



25% of bicycle owners put off cycling due to the fear of bicycle theft. Anxiety over bike theft is exacerbated when people own higher-value e-bikes and e-scooters. Additionally, space owners face regulations on bicycle parking provision and struggle to manage the surging parking demand for various cycle vehicles. MOSA offers intelligent cycle parking and management solutions that help property owners and cities provide smart and secure cycle parking by digitising existing bike racks with patent-pending lock technology. At MOSA, the mission is to bring free-to-use smart and secure cycle parking to everyone regardless of their gender, age, and income.





Murwa: Urban parking docks

Value proposition



Murwa is a parking station with an electric charging system - designed to scale micromobility in cities sustainably.

Product details



The Murwa model is the ultimate solution for orderly and safe parking of personal micromobility vehicles on city streets. Murwa is modular, lightweight and 100% compatible with all models on the market. It can be used for parking by bicycles, scooters, or hybrid vehicles. The station can be integrated into bus shelters or similar street furniture. For more secure private outdoor usage, the station can be upgraded with a security camera system.



Parkey: B2B platform parking

Value proposition



Parkey increases office parking lot utilisation by allowing employees to book and release parking spots on a daily basis.

Product details



Parkey is a B2B platform that enables flexible use of a company's parking spots so a greater number of employees can commute by car and use the parking lot. The company's unique value proposition is based on low entry cost and a high level of customisation. Corporate parking spots are a very scarce asset for a company and usually most employees don't have one. However, each day up to 60% of office parking spots are not used as people travel, are working from home or are on sick leave. This creates a big financial waste for a company, but also for other employees that lose time looking for a free spot. Parkey's mission is to move thousands of cars out of the busy streets of big cities.





Pealock - electronic lock

Value proposition



Smart electronic lock for bikes, e-scooters etc. with GPS module, motion sensor, integrated alarm and automated notifications sent directly to users' mobile phones.

Product details



Pealock is a smart electronic lock for bikes and e-scooters, equipped with a GPS module, motion sensor, integrated alarm and automated notifications sent directly to mobile phones via Bluetooth. If customers move away from the lock for a longer distance, Pealock can automatically switch to GSM mode and call the user if necessary. A charged SIM card is included in every package. Customers have two options to unlock / lock their Pealock: either via the NFC card included in each package or via the mobile application. The strap is made of a durable material in which steel wires are pressed and connected to the alarm. The hardened plastic box can withstand even harsh handling in all conditions.



NOVALITY: Smart parking

Value proposition



Secure parking stations for bicycles and scooters, responding to the needs of new urban mobility.

Product details



NOVALITY is a safe and smart parking solution designed to fit with the urban micromobility vehicle users' needs. All stations provide individual lockers and electric charging points to leave your vehicle, helmet, and other belongings in total privacy. Space is optimised by offering 10 lockers in only 5x2m: equivalent to a car parking space, fitted with solar panels for energy self-sufficiency. Stations can be implemented as underground or semi-underground stations. NOVALITY's technological platform uses PLC-based software that integrates the telematic management of parking stations, encrypted communications, and the flow of reservations by users.





Soca: Urban parking docks

Value proposition



Soca is a parking station with an electric charging system - designed to scale micromobility in cities sustainably.

Product details



Soca is a scalable parking and electric charging system for bikes. The system is compatible with any model. Soca is a modular, light and aesthetic - perfect for outdoor installation. Each bike is secured with 2 magnesium chains with an anti-scratch cover. Each module incorporates two parking spaces with security lockers, with ventilated and anti-theft solid doors, to store the helmet, saddle and battery while charging.



Trap: Urban parking docks

Value proposition



Trap is a parking station with an electric charging system - designed to scale micromobility in cities sustainably.

Product details



Trap is committed to promote sustainable micromobility in cities. Trap allows citizens to park their personal mobility vehicles, such as scooters, bikes, or skateboards, orderly, thus helping cities to manage micromobility in an intelligent way. Trap is compatible with any model of electric scooter, and can be connected to renewable energy sources such as walkable photovoltaic floors and solar panels. Trap comes with a high-tech multi-locking and security system to provide greater protection for each mobility device. All stations are easy and convenient to use thanks to the mobile app, keypad, RFID and geolocation system integrated in the docks.





vadeBike: Docking stations

Value proposition



vadeBike is the solution that enables micromobility in the safest and smartest way. vadeBike offers its service to incentivise sustainable mobility by integration of new business models.

Product details



VadeBike is safe and smart parking device, suitable for all types of bicycles and kick scooters. Efficient, easy and user friendly. Each vehicle is securely locked by three anchor points to prevent theft. With storage space for the helmet it incentivises safe cycling in cities. The smart reservation and booking platform takes parking to the next level. The platform is connected to the cloud infrastructure providing real-time management services 365/24/7. With the subscription, customers get access to all available parking lots distributed in the city. It can be operated from the web and/or app, to manage the devices as well as for extended services.



Lokit Wallbox

Value proposition



Unlock urban mobility with Lokit Wallbox – the smart, sustainable choice for micromobility solutions!

Product details



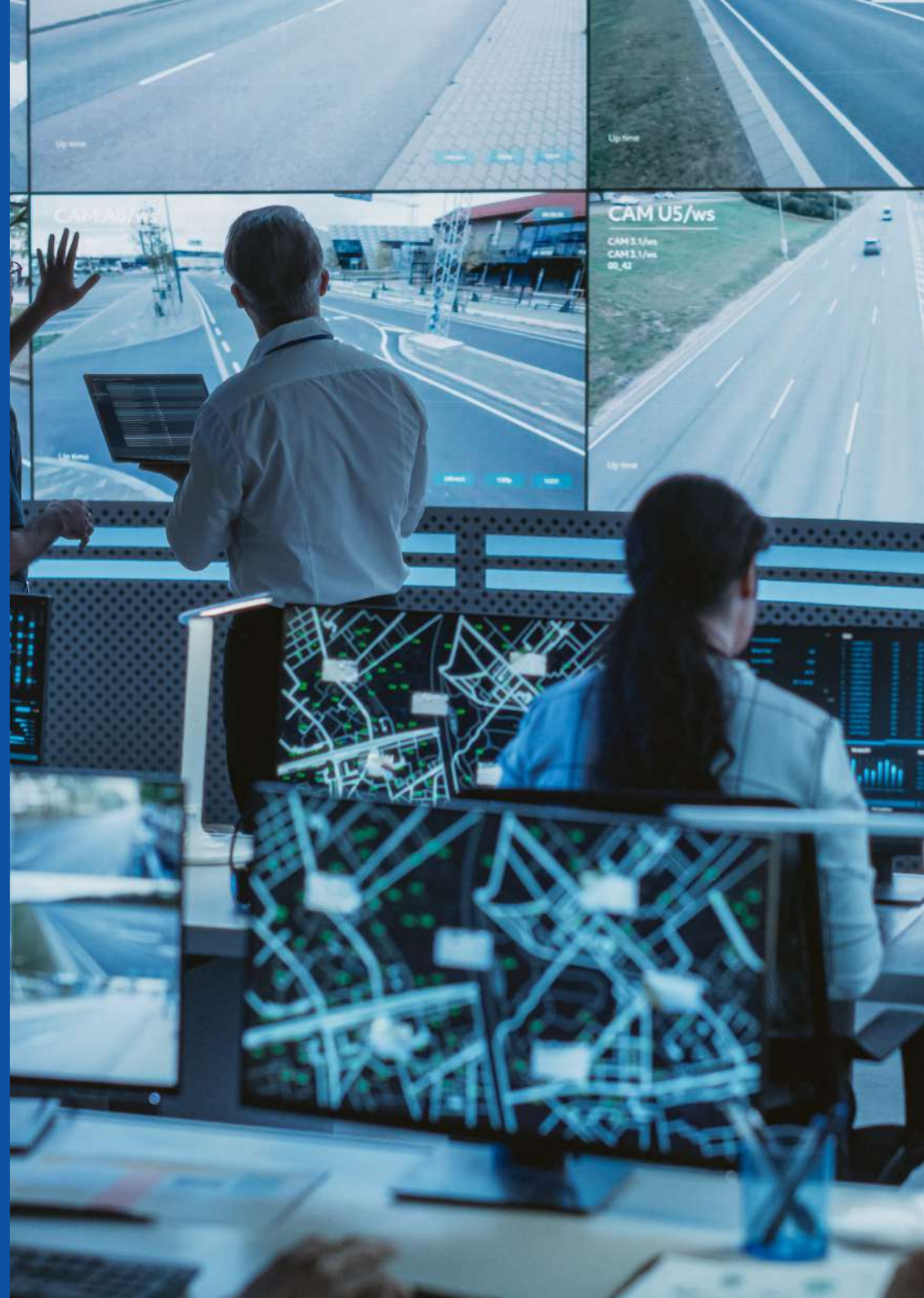
Lokit Wallbox is the solution to transform a city into a model of sustainable mobility! Wallbox is an innovative solution, purpose-built for municipalities, providing seamless charging and secure parking for e-scooters and e-bikes. Customers say goodbye to the chaos of scattered micromobility vehicles in the streets. With Lokit Wallbox, users will not only enhance the quality of life for their citizens but also boost the appeal of their cities. The Wallboxes are designed to fit seamlessly into their urban landscape. Lokit Wallbox offers advanced features like digital advertising displays, data analytics, and security cameras, giving users a robust platform to manage their city's micro-mobility infrastructure efficiently.

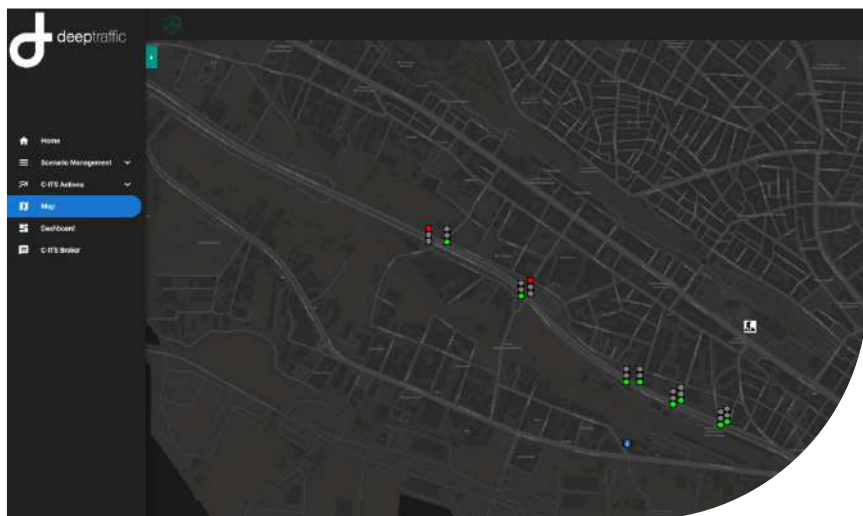


MORE MOBILITY SOLUTIONS TO EXPLORE!

Here you will find solutions related to: Cooperative, Connected, and Automated Mobility, mobility planning, public space design, road safety and security, and Urban Vehicle Access Regulations.

EXPLORE ALL THE SOLUTIONS!





deeptraffic 101

Value proposition



The future of dynamic traffic management for connected and automated vehicles.

Product details



Deeptraffic 101 is the solution for dynamic traffic management of connected and automated vehicles which allows traffic managers to exploit the increasing availability of vehicles' connectivity data and services. Deeptraffic 101 is a web-based SaaS solution, which interfaces with existing traffic management centres, as well as with third party data sources, in order to maintain a real-time view of the conditions in the road network. Activate, monitor and de-activate connected vehicle services for effectively implementing the traffic management strategies to provide personalised information and guidance to drivers of connected vehicles. Deeptraffic 101 provides a fully automated operations mode.



Greenroads: Traffic video analytics

Value proposition



Transforming urban planning with AI-driven road real-time insights for smart, sustainable cities.

Product details



Greenroads is offering a state of the art artificial intelligence platform that can be used to gather meaningful information from internet-connected cameras, giving urban planners, authorities and private developers access to an entirely new data source with which to take data-driven decisions. Greenroads' AI platform gathers road and open space GDPR compliant data which is vital for insightful urban planning, prioritising pedestrians and cyclists. Its AI platform uses internet-connected cameras, providing urban planners, authorities, and private developers access to real-time data. The platform is intuitive and provides informed, data-driven decisions, optimising city development.





ITC: Smart traffic control

Value proposition



ITC is an innovative software-only solution that improves the usage of the existing mobility infrastructure and generates tangible benefits, while lowering the total cost of traffic management.

Product details



ITC adds a brain to the traffic grid: measuring traffic, predicting congestion, and mitigating it – at a fraction of the cost of the prevailing intelligent traffic management solutions. Feeding off conventional CCTV cameras, ITC's proprietary AI algorithms categorise and analyse all road users and, through smart operation of traffic lights, implement the traffic policies and priorities of the relevant authority. ITC also detects potential collisions in real-time and calculates potential responses, boosting the safety of intersections, where more than 40% of traffic accidents occur. More than 10 municipalities are already operating the ITC solution.



A.S.S.E.S.S.

Value proposition



Vertliner provides a platform for autonomous assessments of urban infrastructure. The system embeds robotic technologies, such as drones, to evaluate the health of buildings and construction sites.

Product details



Building assessment is a thorough, lengthy, and risky process, disconnected from the construction progress, requiring contractors to physically visit each area to survey dimensions, structural deviations, and anomalies, to ensure the provision of a system compliant with the building's physical specifications. ASSESS is an integrated robotic platform consisting of an autonomous unmanned aerial system device, a software tool for data analysis, and a web dashboard that visualises hard-to-reach building assets by traversing confined spaces not easily reachable by engineers. ASSESS empowers key stakeholders of the architecture, engineering, and construction sector to remotely survey urban building assets.





IPA2X: Pedestrian assistant

Value proposition



IPA2X is built to help children, the elderly, and people with disabilities to safely cross the street.

Product details



IPA2X Robot is an intelligent autonomous rover that facilitates crossing of intersections for children and elderly people, thus promoting zero accident cities by increasing their safety. The rover intends to reduce costs and risks for traffic helpers and local police units that currently facilitate pedestrian crossings at dangerous intersections. Why IPA2X? Promotive of active mobility; increased pedestrian safety; increased mobility of vulnerable groups; lowering costs of local police presence; reduced carbon and noise emissions; new urban space focus.

**THIS COULD BE YOUR
PRODUCT...**

INTERESTED? Get in touch!



marketplace@eiturbanmobility.eu



Get in touch!



Nommon Mobility Insights

Value proposition



Nommon Mobility Insights provides accurate, up-to-date and complete information about travel demand patterns that helps cities and operators align transport supply with mobility needs.

Product details



By partnering with mobile network operators, Nommon Mobility Insights collect anonymised mobile data records that are then processed and fused with other data sources to produce trip matrices and other travel demand indicators. The solution is the result of an intensive research effort to meet the needs of the transport industry. The key features of the product include: detailed trip characterisation (origin, destination, time of the day, duration, distance, purpose, mode, route/service, type of vehicle, frequency, etc); segmentation by travellers' sociodemographic profile, fully customisable study area, zoning system, study period and temporal resolution.



CommuteSaver: CO2 emissions tracker

Value proposition



World's first automated mobile CO2 emissions tracker for commuting.

Product details



World's first automated mobile CO2 emissions tracker for commuting. Measure and reduce employees corporate commuting in an automated and fun way. Corporate sustainability strategy is an important step for reaching the EU's goal of net zero CO2 emissions by 2050. CommuteSaver offers corporations a unique data based method to track, measure and reduce their CO2 footprint based on commuting patterns. After the sample period, the data is aggregated and reports are produced for both the individual user and the office, as well as any potential project. These reports include recommendations for achieving sustainable commuting based on the organisations goals. The users are completely anonymised and only their travel patterns and CO2 footprints are collected.





Electric Avenue Bikes Ltd

Value proposition

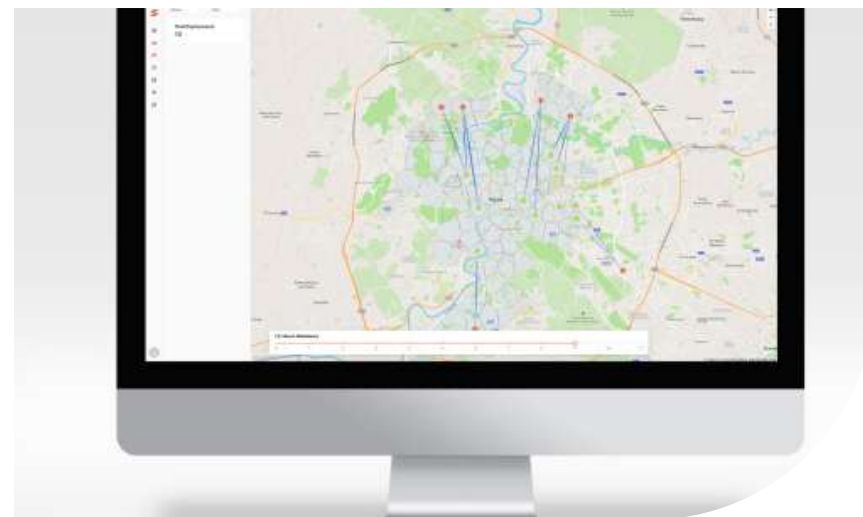


By pairing sustainable technology with traditional practices, Electric Avenue overhauls, repairs and recycles lithium-ion batteries in the dawn of an electrically driven age.

Product details



Electric Avenue is a B2B bike share provider and a retail e-bike store. Electric Avenue current project is building up capacity to repair, refurbish and recycle lithium-ion batteries for use in a second life and the repurposing of old cells for a third life in back-up energy storage systems. The EU battery regulations are introducing digital product passports, end of life management conditions and the right to repair conditions for EV battery packs. Electric Avenue will facilitate these new regulations by providing repair and overhaul services for end users, micromobility operators, suppliers and manufacturers of e-bikes and scooters.



SWITCH: Mobility demand prediction platform

Value proposition



Revolutionise shared fleet distribution, operations and city planning and monitoring with SWITCH, the innovative AI-powered SaaS platform for data-driven, sustainable urban mobility solutions.

Product details



Customers can experience the future of urban mobility with SWITCH, a state-of-the-art B2B SaaS platform tailored to optimize fleet management and city planning. SWITCH supports mobility providers and local administrations by streamlining vehicle distribution, maintenance operations, and transportation system efficiency. The platform comprises multiple modules, including data visualisation and management, performance forecasting, strategic rebalancing, and city insights. Harness the power of data-driven decision-making and unleash customers' fleet's potential while building sustainable cities with SWITCH.





NUDGD: Smart Nudges Mobility

Value proposition



Smart Nudges Mobility: A cost-efficient tool that uses timely nudges, grounded in behavioural science, to guide customers towards climate-friendly travel habits, enhancing both health and environment.

Product details



Smart Nudges Mobility is a customers personal guide to sustainable travel in the era of climate change! Leveraging insights from behavioural science, the platform nudges customers towards eco-friendly transport options, making it easy to adopt sustainable habits. Experience the power of the „fresh-start effect“. The entire process is measured to evaluate the impact of the user's sustainability investment. Municipalities and workplaces trust us to bridge the gap between intention and action for their communities. Join the movement towards a greener future and see tangible benefits. Some results: 43% of the users reported that the platform made them change, or plan to change, to a more sustainable mode of transport.



Nabogo Carpooling

Value proposition



Nabogo is a platform for daily carpooling integrated with public transport, that leverages existing resources and supports mobility outside major cities.

Product details



In the face of rural depopulation and rising urbanisation, providing acceptable levels of transport at low costs is a challenge. Nabogo addresses this problem by proposing a smart carpooling solution. Nabogo's approach combines digital platforms, strategic partnerships, and data-driven insights to create a win-win scenario for users, municipalities, and the environment. The platform connects commuters with available car seats. Users can easily find and join carpoools for their daily trips, and by seamlessly integrating carpooling with existing bus and train services, Nabogo provides an efficient and simple mobility solution.





BGI Builder

Value proposition



For urban risk managers, Bitagreen provides data, models and monitoring to prioritise blue-green infrastructure investment with highest risk reduction and resident well-being increase.

Product details



Cities over the world are grappling with a massive responsibility to increase their climate resilience. Investing in green infrastructure is a smart way to turn climate resilience not just in a cost, but in a smart and effective way to make cities more liveable. Why? Because green roofs, raingardens, porous pavements and urban trees are proven to reduce the negative impact of heat islands and floods, while also improving air quality, biodiversity and noise levels...a win-win for nature and citizens! For this, cities need to know where to invest in green infrastructure to achieve maximum impact and clear ROIs for different players. And this is where Bitagreen comes in and develops software and know-how to maximise blue-green value!



SET: Street Experiments Tool

Value proposition



SET helps to implement street experiments (quick and low-cost interventions) and develop long-term strategies in cooperation with different stakeholders.

Product details



Street experiments are an urban planning tool that allow cities to respond quickly, creatively, and cost-effectively to mobility and public realm challenges involving organisations and society in general. Services include analysis of the specific local context of the street experiment prior to the start. It supports the client to adapt their city strategies for long-term systemic change and helps to identify necessary resources, time frames, materials, and stakeholders to be considered. Implementation phase includes: activations in public space, tactical urbanism, placemaking and during the evaluation phase, it assesses the impacts of the experiment. Tailor made workshops based on SET Guidelines Kit are offered to the cities.





WeSolve: Community engagement

Value proposition



Gather data through engagement and understand the wants and needs from your communities and citizens by implementing them directly into your decision-making process through our holistic framework!

Product details



WeSolve offers you a holistic and inclusive engagement tool, which allows you to understand your communities by actively engaging them in the creation of tomorrow! Community engagement has become the pillar of co-existing in a piece within local municipalities and co-creating sustainable and lasting solutions for a higher quality of life are essential to economic development. WeSolve's digital tool lets you create targeted engagement activities such as surveys, polls, idea collections, or the sharing of life experiences that give your communities and citizens the possibility to feel and be heard. Gather and share knowledge through your community in engaging ways and let them lead the discussion.



Parkly: Modular urban furniture

Value proposition



Parkly's multifunctional and modular urban furniture helps to rapidly change and reimagine our cities, while pioneering circular economy solutions.

Product details



Parkly is a movement with a mission – transforming urban spaces into green places. Parkly's modular urban furniture acts as a catalyst for rapid city transformations, embracing circular economy principles. With its multifunctional system, the potential is vast: from parklets and street makeovers to pop-up parks, rooftop terraces, and inviting gathering spots – and more! The sleek Nordic design, paired with a placemaking approach, proves remarkably effective in revitalising public spaces. Additionally, ParklyCreate, an intuitive 3D builder, offers everyone an effortless means to craft their unique Parkly module set. Beyond aesthetics, Parkly's brilliance lies in its circular and smart design, minimising storage, shipping, and handling costs.





VePa: Vertical Parking

Value proposition



VePa provides the most space-efficient and sustainable parking infrastructure to facilitate the transition from traditional to zero-emission mobility concepts. VePa rethinks parking and mobility!

Product details



VePa helps companies and institutions to create efficient parking space or convert existing space into vertical parking. The VePa Tower vertically stores 12 cars in an area of two parking spaces (corresponds to approx. 40 m²). In this way, the potential usable areas of real estate within cities can be fully exploited and large amounts of CO₂ are saved. This means that parking spaces can either be created efficiently and sustainably, or existing parking spaces can be converted and used for other purposes. With add-ons such as electric charging stations, photovoltaics, facade greening and advertising space, VePa Towers fit well into existing environments and offer a wide range of possible uses.



waveOut: Audio AR platform

Value proposition



See the world through your ears! The latest technology of waveOut platform brings a non-intrusive audio layer to navigation systems by allowing users to simply follow sounds to find their way.

Product details



Way-finding is a fundamental part of the lives of billions. From cyclists to visually impaired people, there can be a better way of navigating urban environments without heavily relying on visual directions - AR Sound. This is why waveOut provides an intuitive, seamless and hands-free audio navigation. 3D sound points are placed along the users' routes. The sounds feel anchored in the real world and the users simply need to follow them one after the other to get to their destination. WaveOut app aims to develop and deploy the best audio way-finding experience. This lays the foundations for a plug-and-play solution with a B2B licensing model for the customers that look to add an audio AR layer to their existing navigation experience.





Cocoon Airbag Protection

Value proposition



Cocoon is a patented airbag protection system for bicycle child seats that has the potential to save lives.

Product details



Almost 50% of all traffic accidents are related to cyclists. Carrying a child on the back seat of a bicycle can be especially dangerous, as the child is sitting in such an exposed position. Today, many parents avoid cycling with their children because they are afraid of having an accident. Independent studies have shown how poorly standard bicycle seats protect in the event of a crash. Cocoon is creating the world's safest child seat for bikes. Cocoon is a patented airbag protection system for bicycle child seats that has the potential to save lives. The product is attached to a built-in attachment system on the back of the child seat and will open up as a cocoon around the child seat if the movement patterns match the profile of an accident.



The R.O.A.D. System

Value proposition



The R.O.A.D. System offers efficient road maintenance through AI and human powered data collection to improve the safety, comfort and usability of cycling paths - while saving time and money.

Product details



The R.O.A.D. System comprises an AI powered system, which scans and collects data along the cycle roads. The device assesses and rates the quality of the micromobility infrastructure based on different parameters acquired through device sensors installed on bikes and data extracted from the Copernicus satellites. In particular, the R.O.A.D. System uses IoT sensors and a mobile app to identify the location, detect road anomalies, and monitor critical parameters affecting micromobility like light conditions, traffic, air dust and noise pollution. Using 4G/5G technology, data is transferred to a cloud infrastructure that processes data and generates GIS datasets.





VOOVVOO: Fleet safety

Value proposition



VOOVVOO can proactively prevent speeding and aggressive driving for commercial fleet owners. It is designed to fit almost any vehicle type, is easy to implement and brings immediate safety results.

Product details



VOOVVOO: Drive the future of fleet safety. What is VOOVVOO? VOOVVOO isn't just another fleet management tool. It's a guardian for every vehicle in customers' fleet. While traditional systems merely monitor and report, VOOVVOO intervenes in real-time, preventing risky behaviours like speeding and aggressive driving before they lead to accidents. Why Choose VOOVVOO? Proactive Safety: It doesn't wait for accidents to happen; it prevents them. Easy Integration: Seamlessly integrate VOOVVOO into existing fleet management systems. Cost-effective: Enhance safety without breaking the bank. Imagine a world where every fleet vehicle operates at peak safety, where accidents due to speeding and aggressive driving are things of the past.



PANTOhealth: Predictive maintenance

Value proposition



Stay on track with PANTOhealth's reliable solutions, enabling directed maintenance actions to prevent costly damages and ensure efficient rail operations with minimal downtime.

Product details



Elevate rail infrastructure management with PANTOhealth's predictive maintenance solution! PANTOhealth revolutionises railway maintenance by preventing costly mistakes before they escalate. PANTOhealth's comprehensive solution integrates data from diverse sources, enabling real-time analysis and directed maintenance actions. Unlike reactive approaches, PANTOhealth's proactive solution significantly reduces costs and delays. With their patented Machine Learning core, operators receive detailed guidance for preventive actions, optimising maintenance strategies and minimising downtime. Join PANTOhealth to prioritise reliability and minimise delays.





Parkunload: smart loading zones

Value proposition



Parkunload enables the digital transformation of loading and delivery zones to accelerate the shift towards sustainable city logistics, through a dynamic rather than static regulation of the curb side.

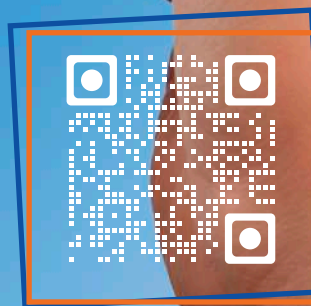
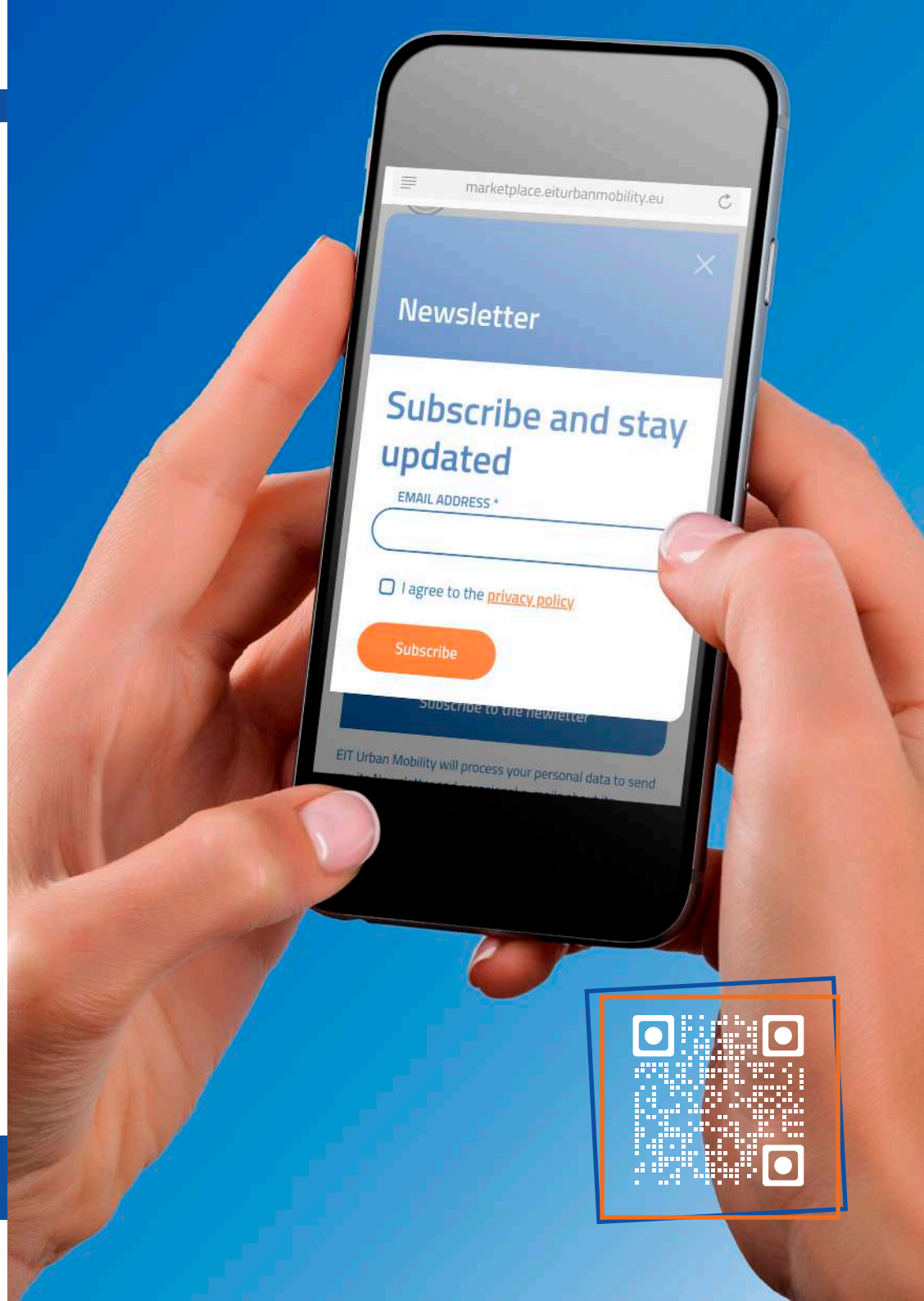
Product details



Parkunload developed an innovative solution for digital loading and delivery zones. Parkunload's platform regulates variable parking conditions according to location, time of the day, vehicle type and tonnage, and user's profile. Parking conditions may be also set-up according to the current city context, providing a dynamic management of the curb side, rather than static. Parkunload's patented principle of operation, based on mobile apps and Bluetooth, stands out from complex solutions to regulate, control, and monitor sustainable smart loading and delivery zones. Easy to install, scale and transfer. No road works, mains connection or city's telecom networks. Enabling low emissions zones for urban freight vehicles. Cloud-based SaaS platform.



Get in touch!

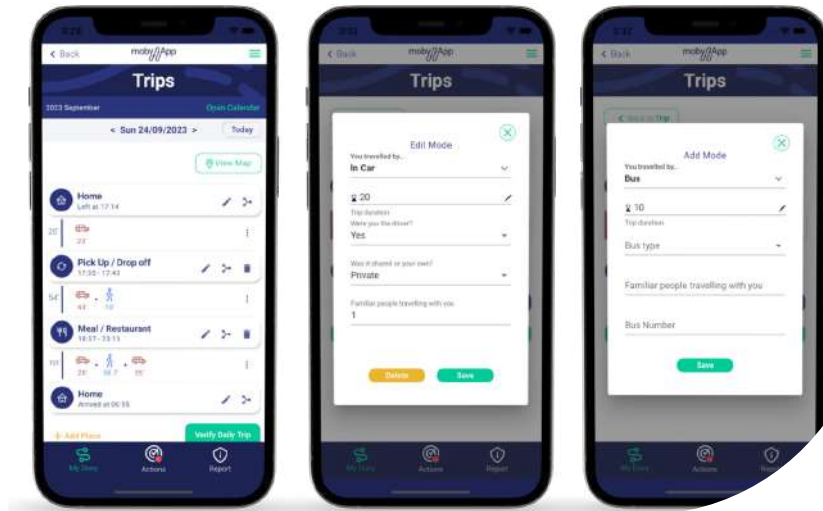


CIVITAS SOLUTIONS

The pathway to boost the adoption of market-ready CIVITAS solutions starts with a Market Readiness Assessment based on engagement and understanding of the projects behind them. EIT Urban Mobility has reviewed CIVITAS solutions resulting from projects closing in 2022, 2023 and 2024.

EXPLORE ALL THE SOLUTIONS!





MobyApp

Value proposition



MobyApp allows the automatic creation of questionnaire surveys and citizens' activities. This incorporates nudging techniques and allows the monitoring of a personalised process of data collection.

Product details



MobyApp allows the automatic creation of questionnaire surveys, citizens' activities and travel diaries, the incorporation of nudging techniques or incentives, and the monitoring and management of a data collection process personalised to the needs of each project's objectives. This technology is an efficient way to prepare sustainable urban mobility plans, travel demand and activity-based models, understand citizens' choices, and movement. MobyApp decreases survey duration and costs, decreases data collection errors, adapts sampling techniques to collect data based on specific triggers or conditions, and is customisable to the client's needs.



ParkPAD

Value proposition



ParkPAD is a tool that provides guidance to cities on their urban parking policies, allowing the improvement of current policies while planning for various future policy goals.

Product details



ParkPAD presents an innovative way of checking in, prioritising, and updating parking policies, introducing a consensus-building process across stakeholders in a highly contentious topic such as parking. This tool's building blocks consist of a self-assessment exercise to capture the state-of-the-art current parking policy, followed by the ParkPAD site visit that includes interviews with stakeholders and alignment with SUMPs, concluded by an action plan to guide a city's future parking actions and activities. The whole process is guided by a ParkPAD auditor who understands the local language and context. ParkPAD has been implemented in more than 35 cities, such as Lisbon (PT), Kehl (DE), and Shkodra (AL).



Get in touch!



Get in touch!



PTV VISSIM

Value proposition



PTV Vissim is a microscopic, time-step-oriented and behaviour-based simulation tool for modelling urban and rural traffic as well as pedestrian flows.

Product details



Vissim allows simulations, signalling and real-time visual and micro-interactions between pedestrian streams, bicycles, public and private transport. It can give realistic and dynamic microscopic modelling of lane driving, parking, loading activity both for motorized and active travel modes, considering the effect of users on the street, on the kerbside and in places. With the new features developed in the MORE context, it offers better modelling of the complex city reality, with its interactions and disruptions.



HARMONY Model Suite

Value proposition



Harmony Model Suite is a next-generation digital twin platform integrating spatial and transport models for strategic, tactical, and operational planning of passengers and freight.

Product details



HARMONY offers hundreds of KPIs to support decision-making, allowing a detailed evaluation of impact scenarios on citizens and travel behaviour through an activity-based modelling module. The platform is software agnostic and can use a range of spatial or transport models that are already hosted in the platform or connect through Adaptors' existing models. HARMONY Model Suite operates on three integrated levels of modelling: Strategic, for regional economics, demographic forecasting, land-use, spatial freight interaction and long-term mobility choice models; Tactical, for a fully agent-based passenger and freight demand model; and Operational, for transport supply and demand interactions at high granularity.





Pollution Monitoring Device

Value proposition



The Pollution Monitoring Device is an autonomous remote sensing system to measure exhaust emissions from road and rail vehicles under real driving conditions.

Product details



By using laser technology for measuring exhaust emissions from traffic, this technology ensures better accuracy, sensitivity, stability, and cost-effectiveness of measurements. Complementary modules to the pollution monitoring ones are incorporated to record the vehicles' speed and acceleration, to capture and identify the vehicle's plate number, and a weather station to link the measurements to niche environmental conditions. The device enables real-world emissions categorisation and mapping of air quality, identification and control of extremely polluting vehicles, and enforcement of such high emitters. The technology can be deployed to control and toll urban access schemes such as LEZ and to control fleets.



Noise Monitoring Device

Value proposition



The Noise Monitoring Device is an autonomous remote sensing system to measure noise emissions from road and rail vehicles under actual driving conditions.

Product details



The device allows for identifying individual road vehicles or train wagons' noise emissions within a traffic stream, without interrupting the traffic flow and while separating the noise origin from engine acceleration or tyre-road interaction. Complementary modules to the pollution monitoring ones are incorporated to record the vehicles' speed and acceleration, to capture and identify the vehicle's plate number, and are connected to a database to map and identify individual extremely noise-polluting vehicles. Moreover, a communication protocol with the drivers makes it possible to communicate to high-noise emitters a request for Periodic Technical Inspection.





Containerised urban last-mile delivery

Value proposition



Instead of vans picking up parcels at a sorting terminal outside the city, containerisation introduces standardised and modular load units, such as specific trolley-containers for the last-mile.

Product details



ULaaDS trialled containerised urban last-mile delivery by grouping together general cargo and parcels heading towards the same city area. These are sorted according to the delivery zone already at the warehouse/freight village. Then, containers heading to neighbouring areas will be delivered at city hubs by truck and collected by cargo bikes for the final stretch. The main advantages of this scheme are: Fast and secure transfer of goods from feeder vehicle to last-mile delivery vehicle; possibility to mix goods from different carriers in the same city hub and compatibility and interoperability among different transport systems and modes.



Cargo bike sharing for private micro-logistics

Value proposition



A cargo bike-sharing service that allows users to rent bikes for private use.

Product details



ULaaDS trialled cargo bike sharing for private micro-logistics. Citizens are able to book and rent cargo bikes at no cost. The main goal was to replace trips otherwise made by car. Although set up as a non-profit operation, future maintenance costs are to be recovered through sponsors from the business community and donations.



Get in touch!



Get in touch!



Shared Zero-Emission Vehicle Platform for Urban Freight Transport

Value proposition



A platform where small companies can reserve logistics vehicles to meet customer transport demands.

Product details



Cities increasingly regulate access for freight transport vehicles (e.g., time restrictions, emission zones, congestion pricing). These regulations aim at reducing vehicle movements and improve sustainability of urban freight transport. Larger logistics firms are often well-equipped to deal with new regulation in this regard. By contrast, smaller companies – especially local shops and suppliers with less knowledge about logistics – may lose access. A platform where those companies can easily reserve a vehicle when they have demand for transport capacity may provide a solution. This solution was successfully tested in Groningen as part of the ULaaDS project.



Decision support tool for parcel locker location and design

Value proposition



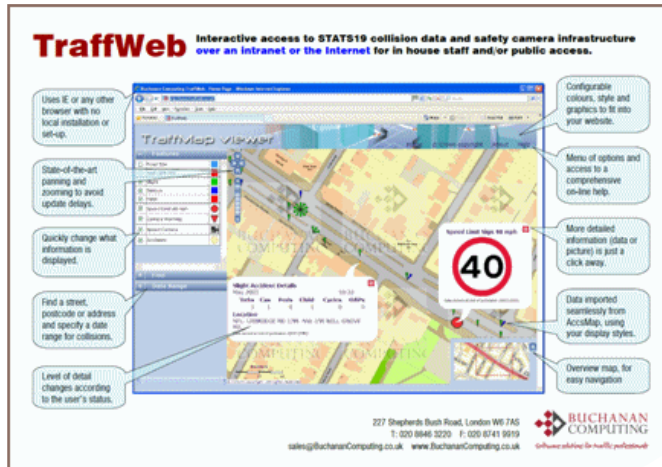
Parcel lockers can be a solution to reduce the congestion and emissions caused by the e-commerce boom.

Product details



Nonetheless, their location and density is critical in ensuring that customers can access them without having to rely on their private cars. Some public authorities are trying to find a middle ground between allowing such services to spread freely on streets, while managing the additional pressure they might bring to public spaces. To this end, ULaaDS developed a tool that allows public authorities as well as parcel locker operators to understand where demand for out of home deliveries will come from, and where parcel lockers should be located. The tool ensures that parcel lockers 1) serve as many people as possible, 2) complement the existing offer of pick-up drop-off points, and 3) support the reduction of logistics motorised trips.





Traffweb

Value proposition



Traffweb is a data portal that manages information on road issues and urban space design options.

Product details



It is an innovative tool accessible to all stakeholders involved in the project, including citizens, centralising all collected information in one platform. The users can report issues in specific areas and comment on the proposed designs, allowing for a more appropriate response for road maintenance, safety, and the right use of new technologies. Traffweb enhances public engagement and facilitates the intricate laborious consultation process, also enabling an easy feedback loop. Its open structure enables the publishing of data from a wide range of sources and is configured to address many different operational needs.



Get in touch!

WHY YOU SHOULD JOIN US.

1

REFERENCE MOBILITY PLATFORM IN EUROPE

2

JOIN 420+ MOBILITY INNOVATIONS

3

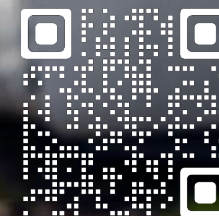
LEARN FROM REAL-LIFE IMPLEMENTATIONS IN
EUROPEAN CITIES

4

BROWSE NEW MARKET OPPORTUNITIES EACH
MONTH TO ELEVATE YOUR BUSINESS

5

STAY UP TO DATE WITH THE NEW MOBILITY
TRENDS



Want to see your solution in the catalogue?
Contact us at marketplace@eiturbanmobility.eu

Stay up to date on the latest
mobility **innovation!**

